



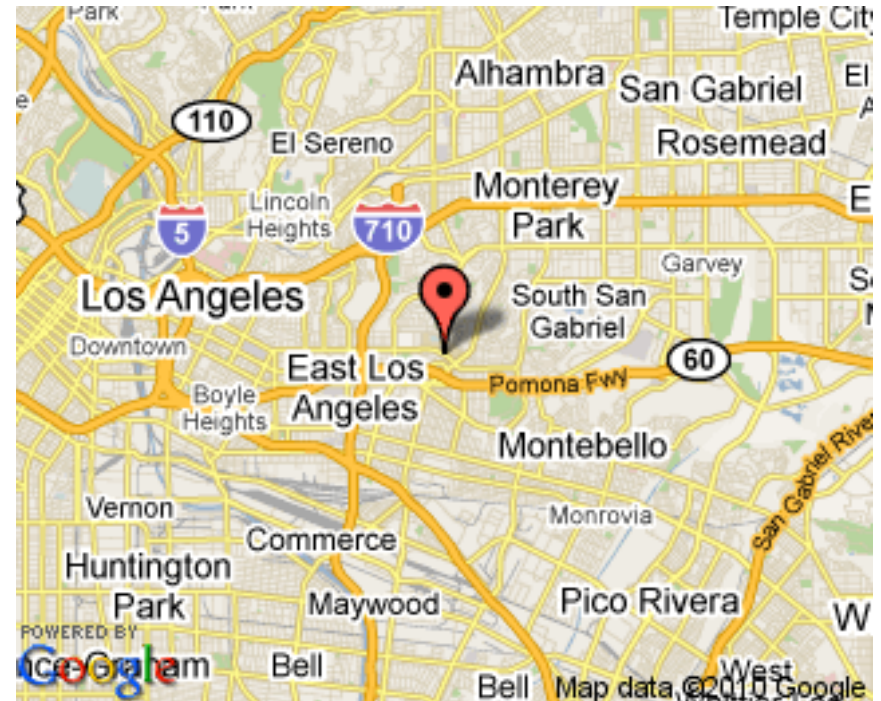
East Los Angeles Community College

Content

- **Introduction**
- **Enrollment Trends**
- **Demographic Characteristics**
- **Transfers**
- **Financial Aid**
- **Math Sequence**

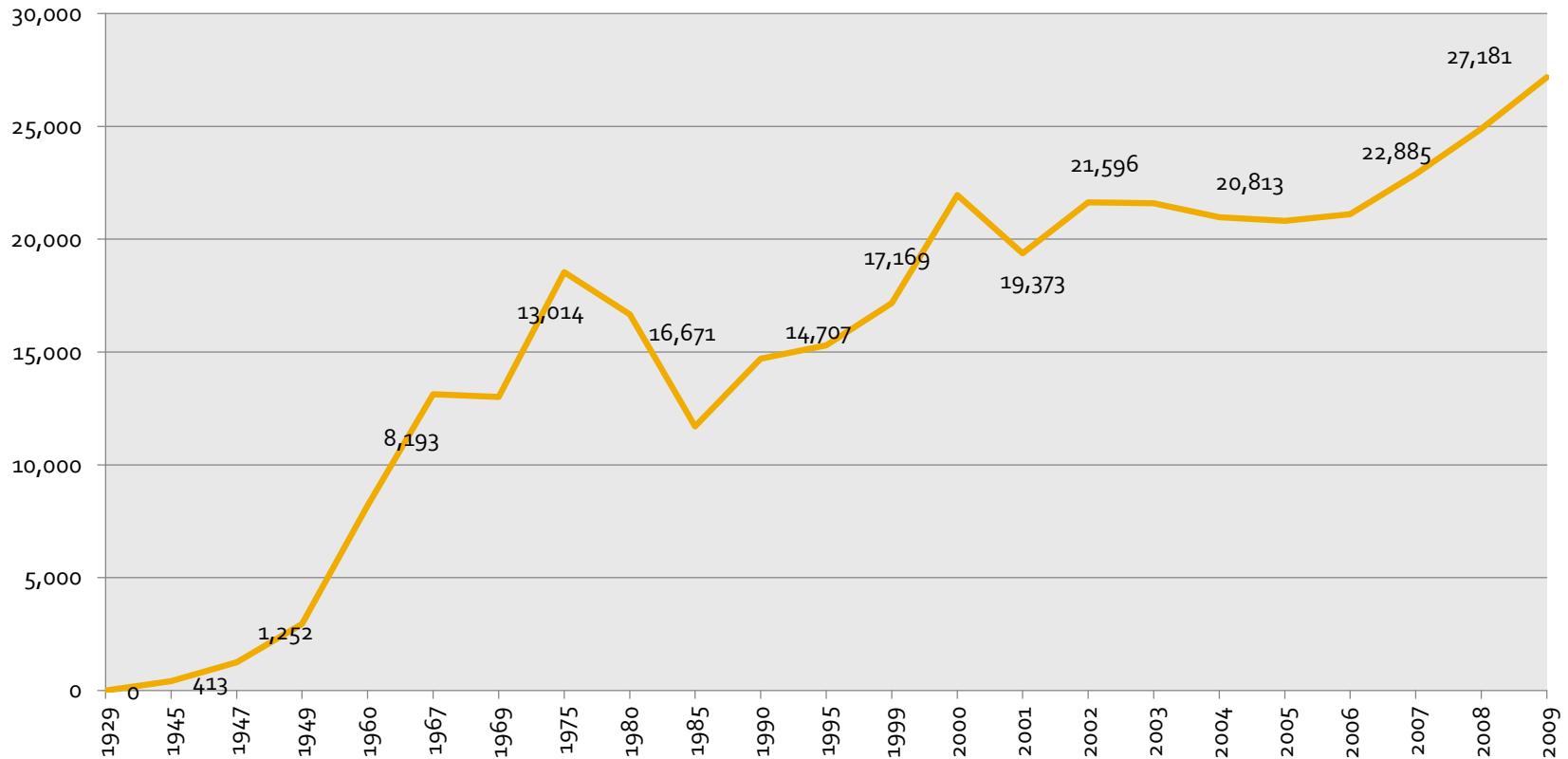
Introduction

- **Located in the suburban community of Monterey Park, California, 10 miles east of downtown Los Angeles**
- **Website: www.elac.edu**



Enrollment Trends

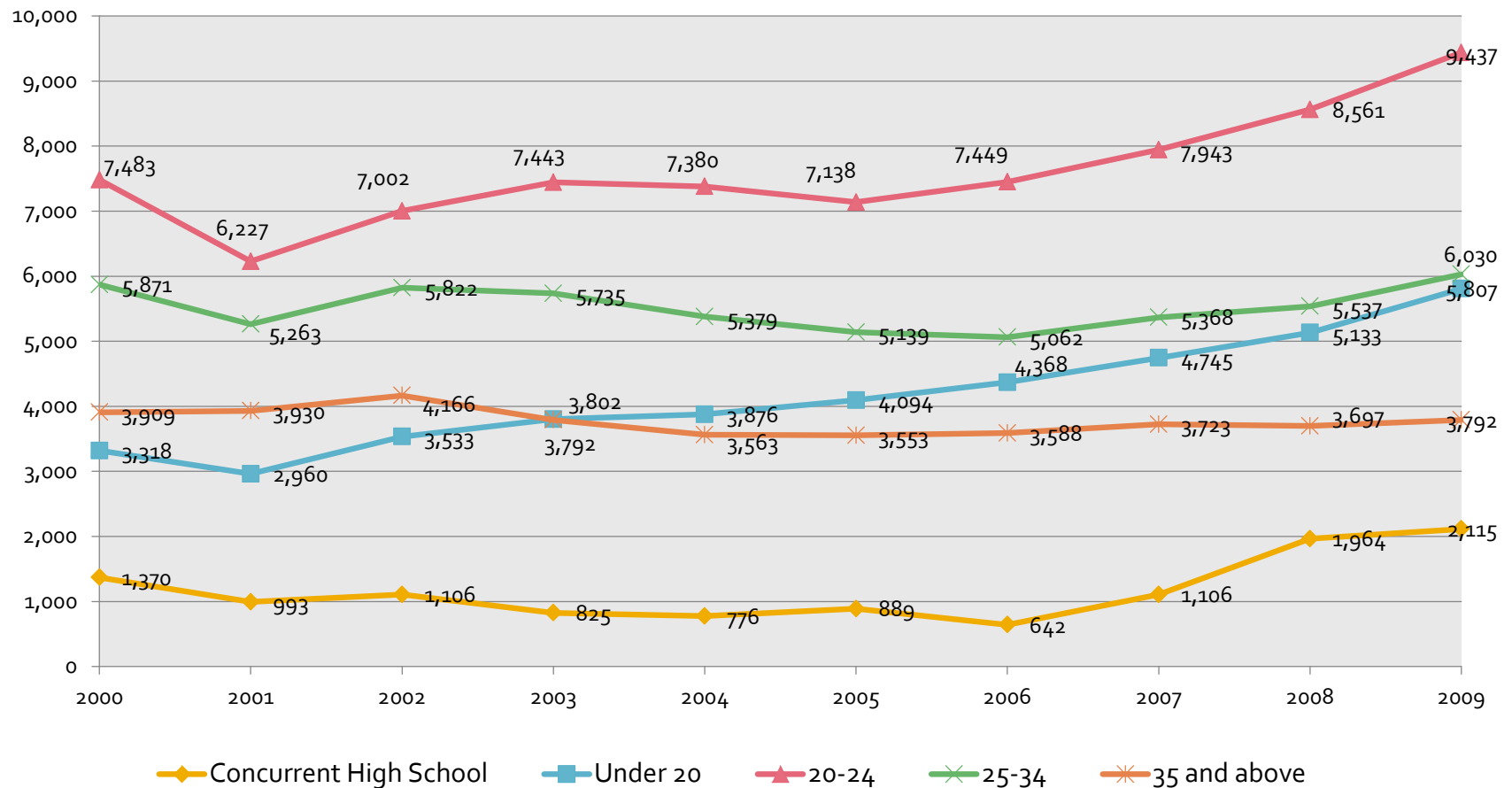
Enrolled: Fall 1929 - 2009



- Overall, increasing trends since 1985

Enrollment Trends

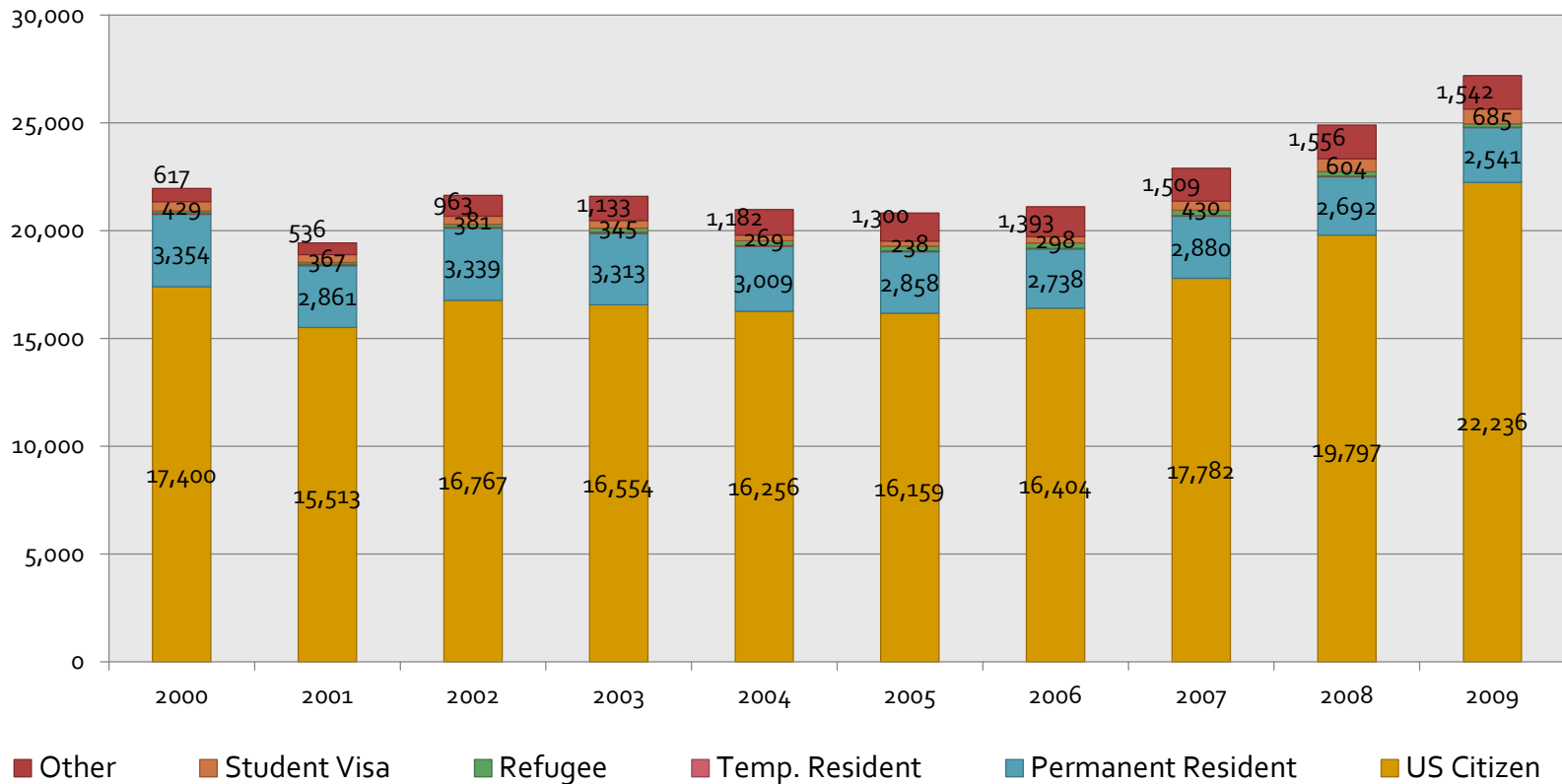
Enrolled by Age: Fall 2000 - 2010



- **All ages show increase except 35 and above**

Demographics Characteristics

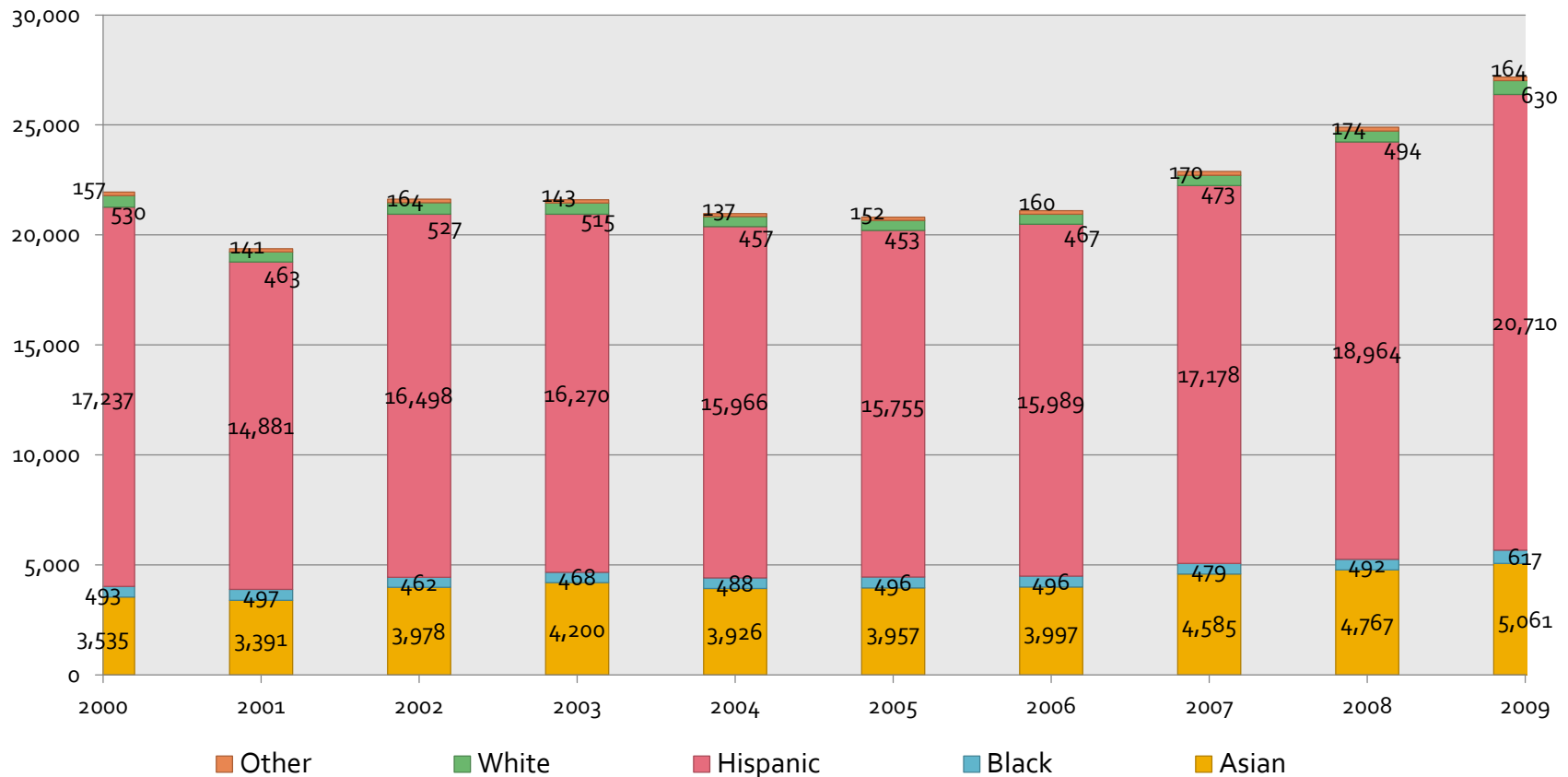
% Enrolled by Citizenship: Fall 2000 - 2009



- Between 2000 and 2009, the majority of LACC students were U.S. high school graduates.

Demographics Characteristics

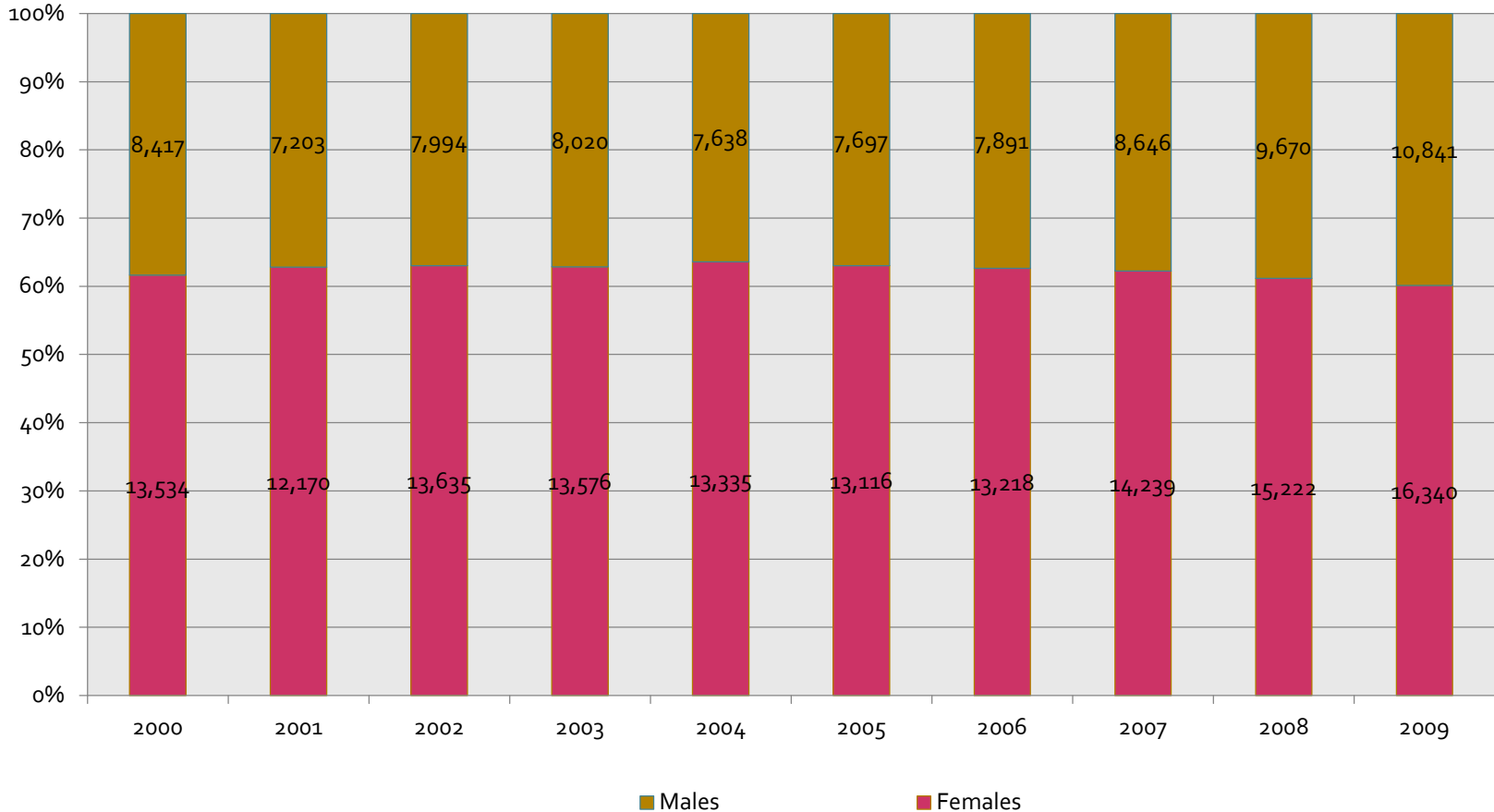
% Enrolled by Ethnicity: Fall 2000 - 2010



- **Hispanic – majority population**
- **Very low White, Black, and Other**

Demographics Characteristics

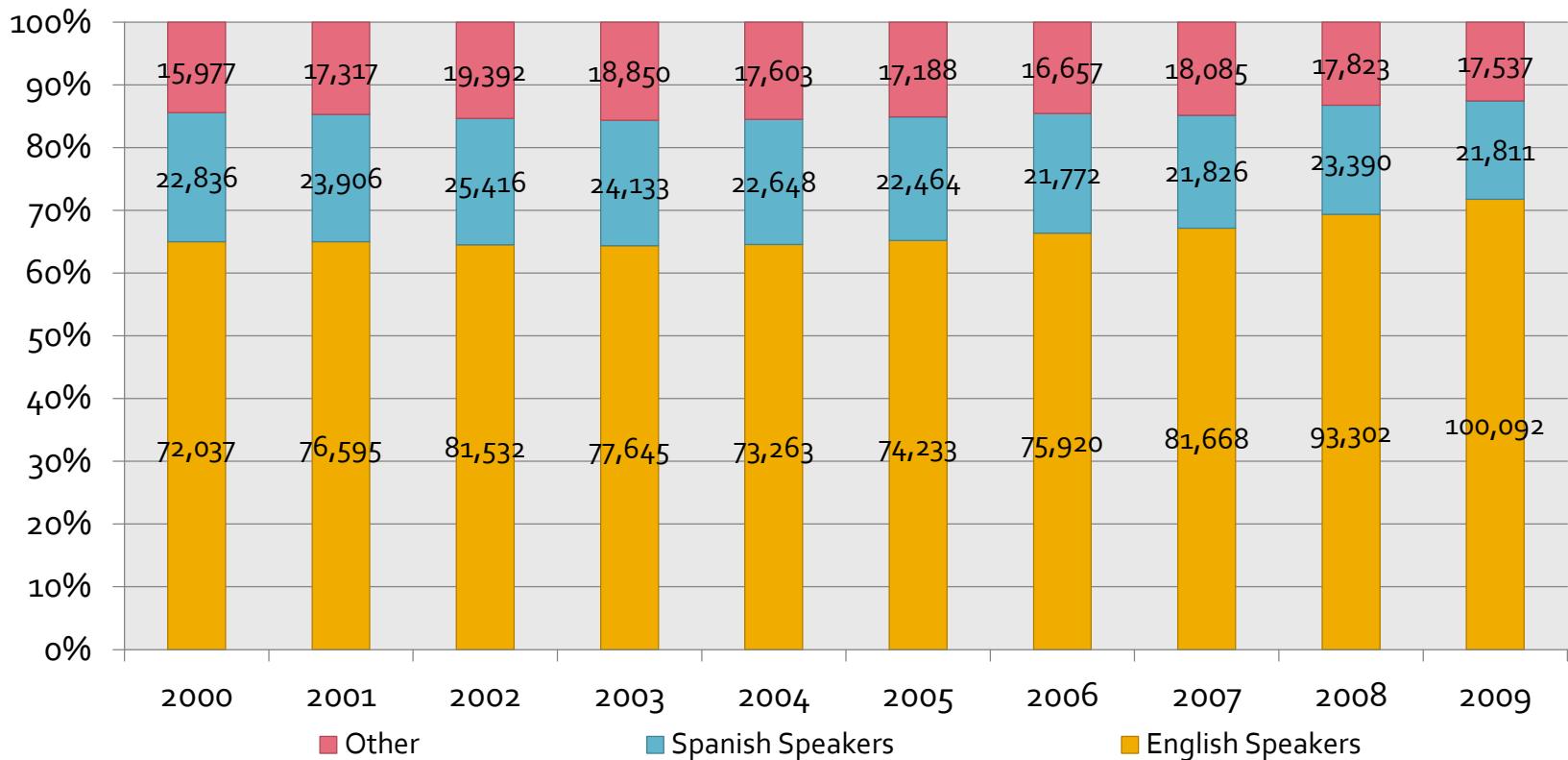
% Enrolled by Gender: Fall 2000 - 2009



- **Stable, 60 to 40 ratio**

Demographics Characteristics

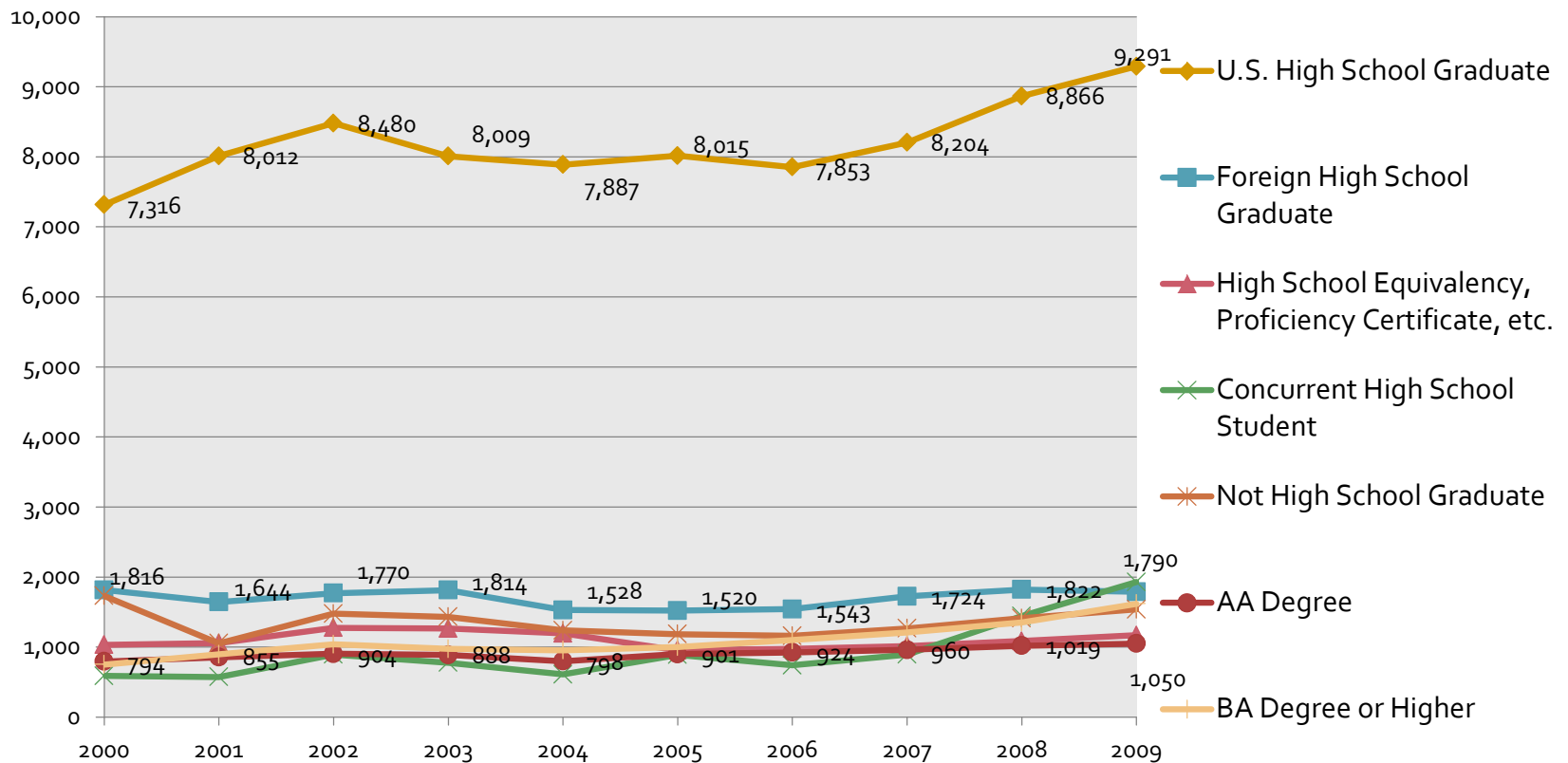
% Enrolled by Home Language: Fall 2000 - 2009



- **~65% English. ~20% Spanish, ~15% Other**

Demographics Characteristics

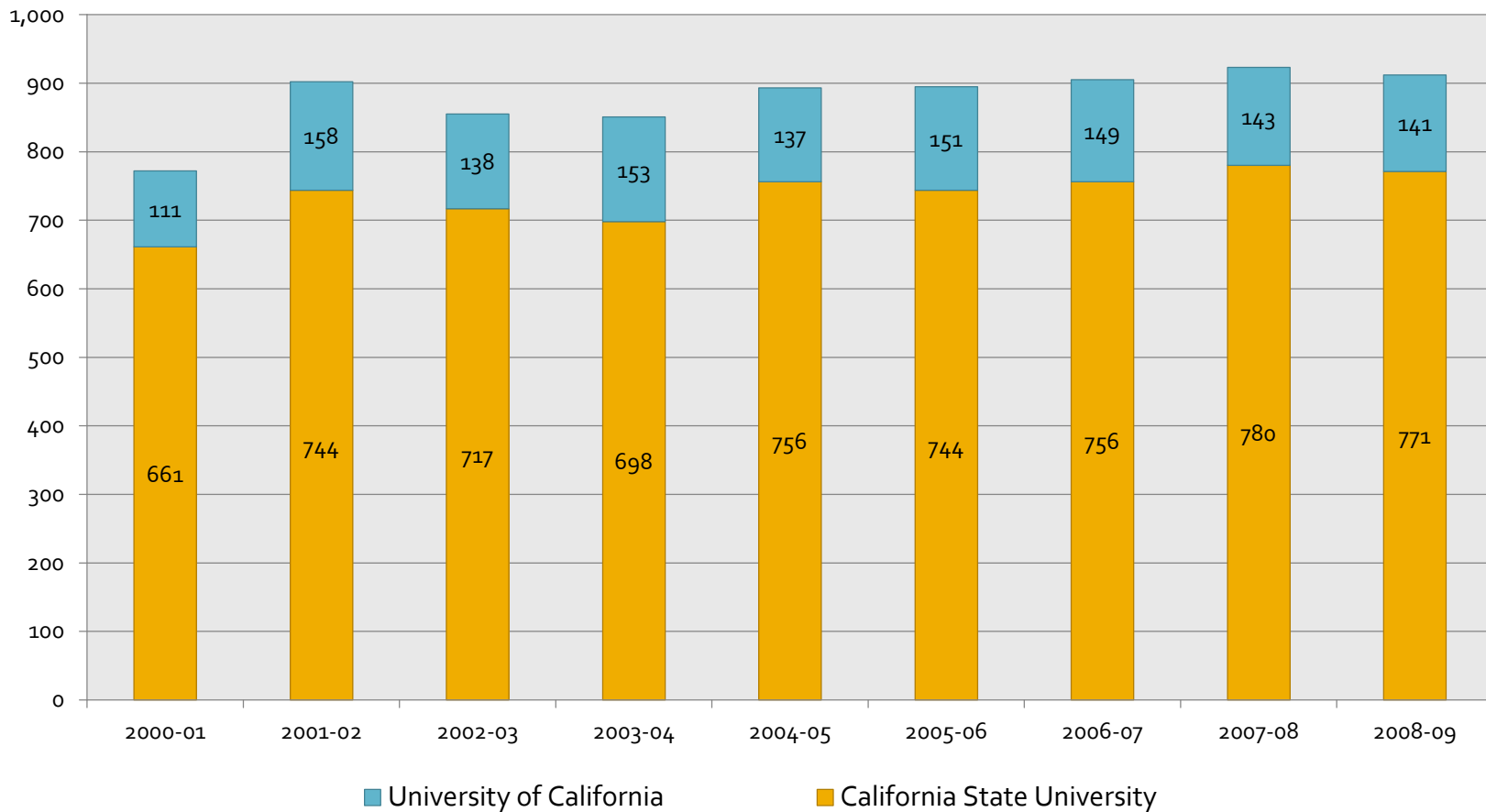
Enrolled by Educational Attainment: Fall 2000 - 2009



■ High proportion of high school graduates

Transfers

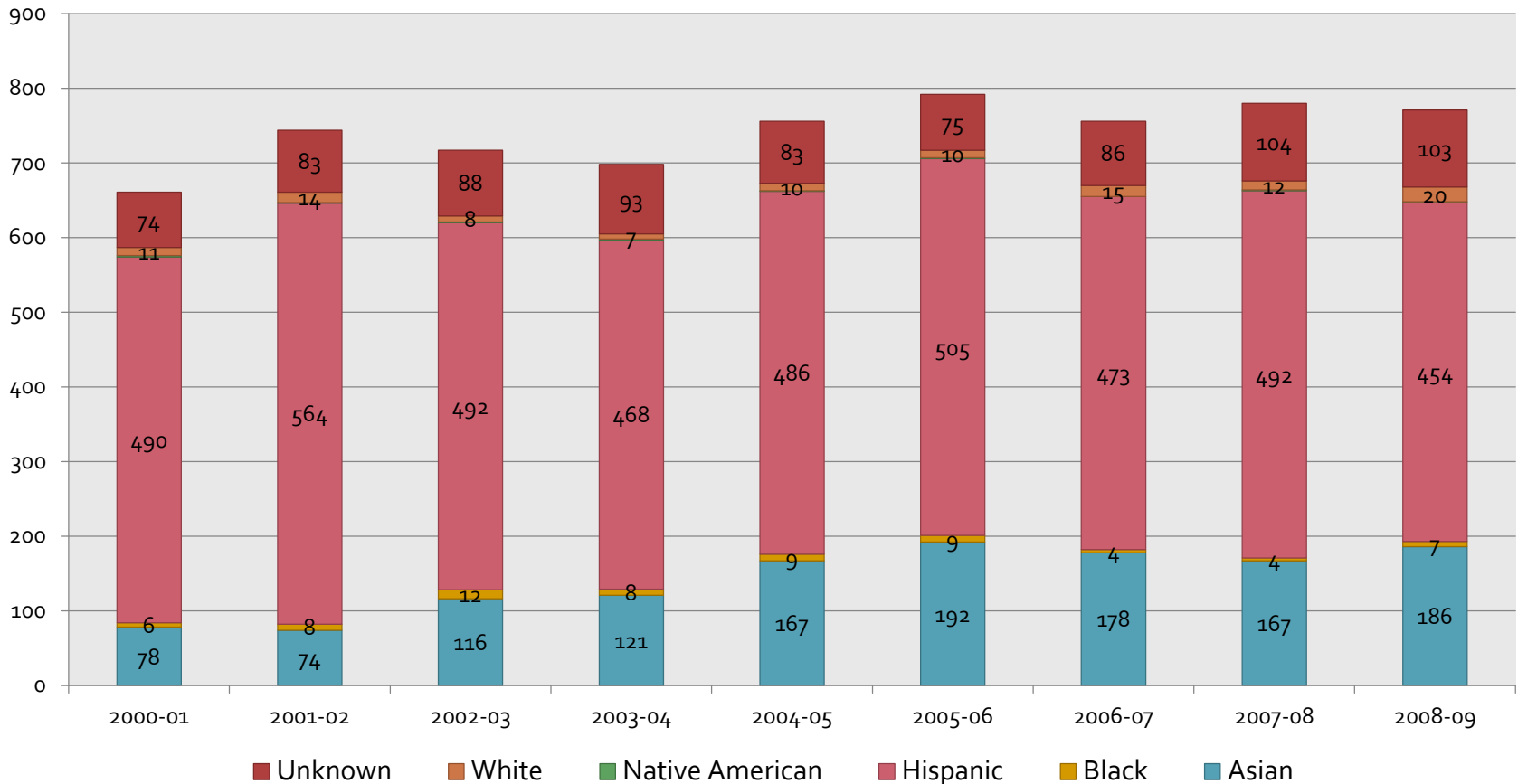
of Transfers to UC and CSU: Fall 2000 - 2009



- **The majority of students transfer to a CSU.**

Transfers

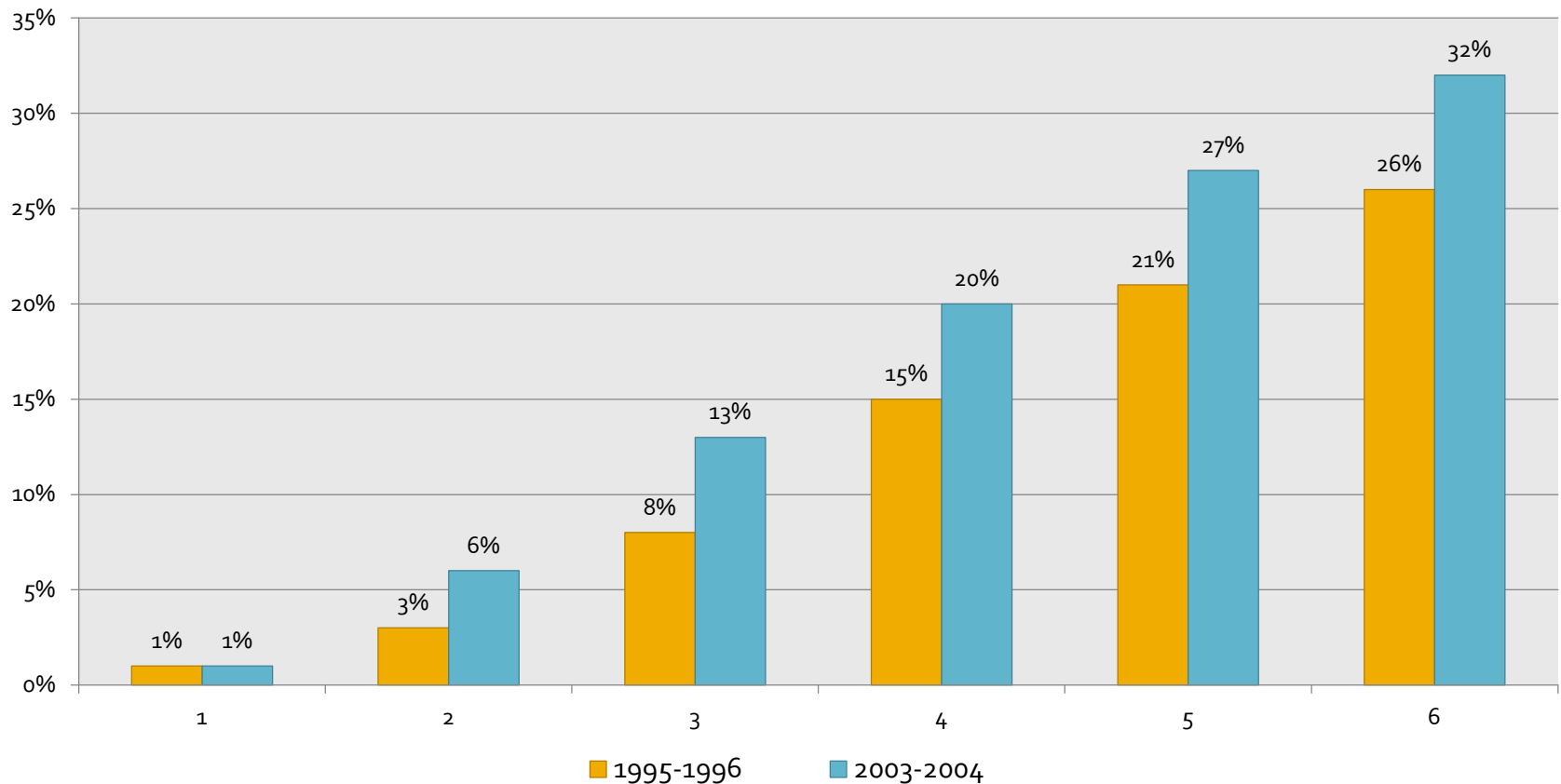
**# of Transfer Students to CSU by Ethnicity:
Fall 2000 - 2009**



▪ **Majority Hispanic transfers**

Transfers

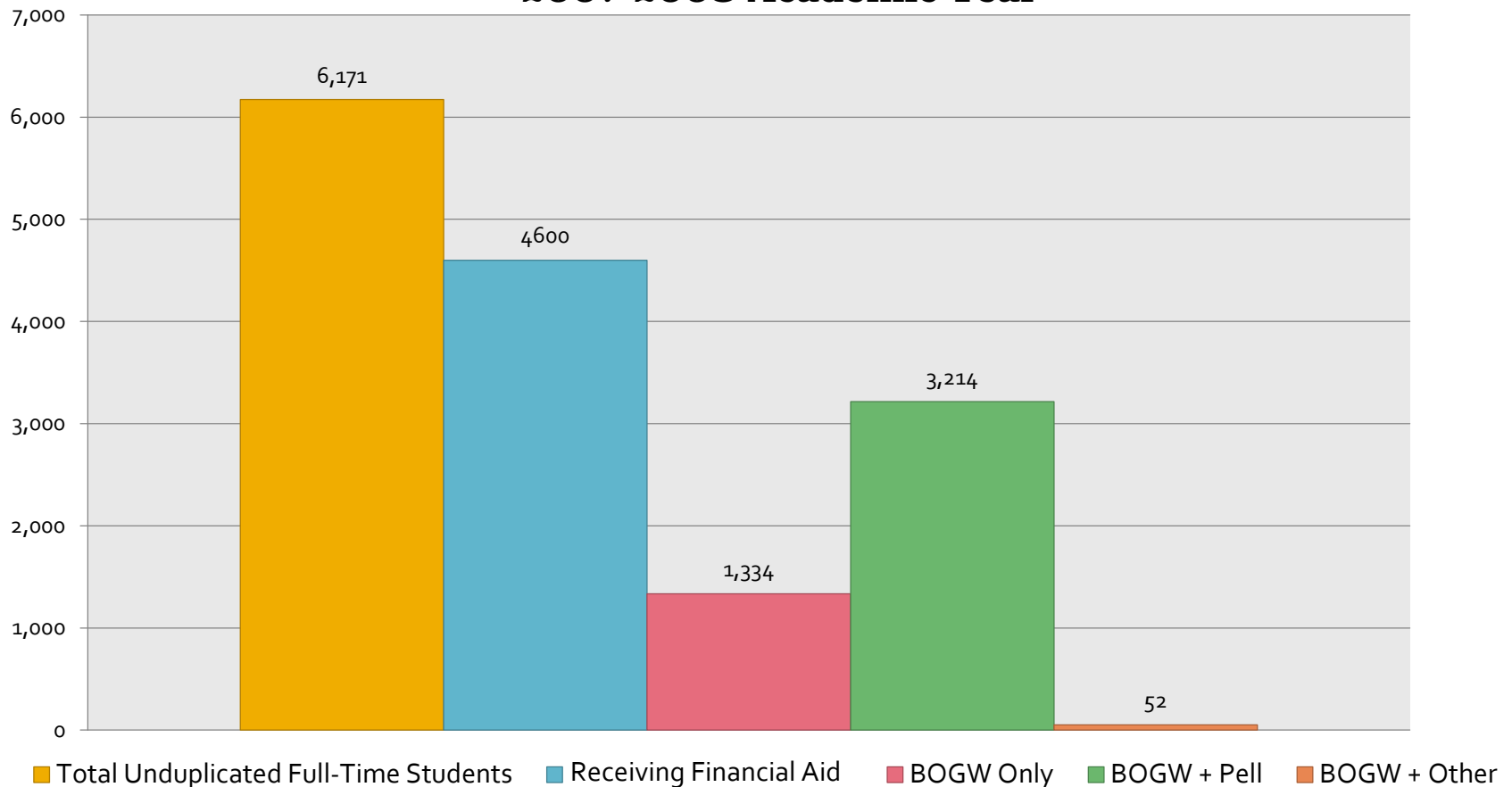
Transfer Velocity Cohort Report (6 years)



Within 6 years, 32% of students transfer who aimed to transfer 13

Financial Aid

**# of Full-Time Resident Students Receiving Financial Aid
2007-2008 Academic Year**



- **~75% of students receive financial aid**

Math Sequence

