



Los Angeles Trade Technical College

Content

- **Introduction**
- **Enrollment Trends**
- **Demographic Characteristics**
- **Transfers**
- **Financial Aid**
- **Math Sequence**

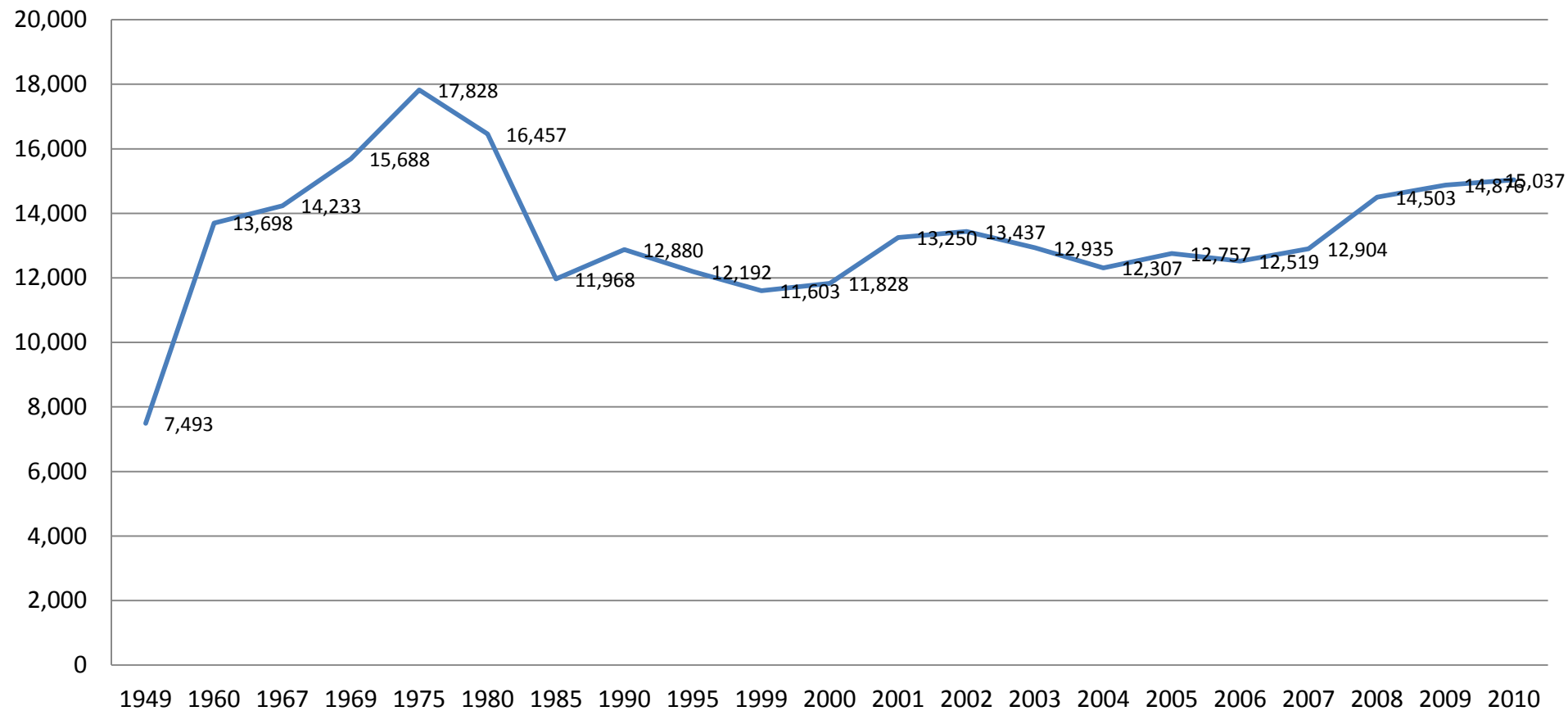
Introduction



- **Located in the City of Los Angeles approximately two miles south of the Central Business district**
- **Website: college.lattc.edu**

Enrollment Trends

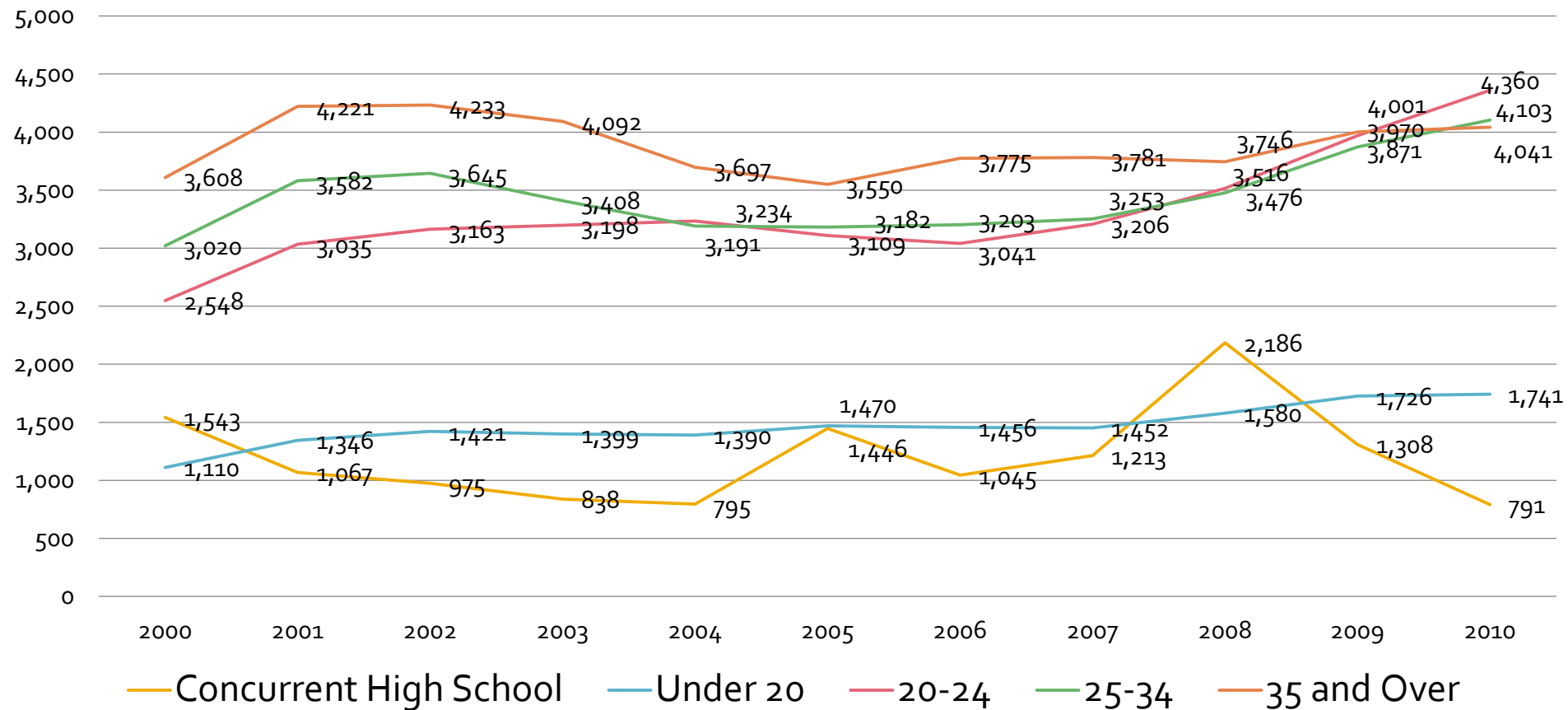
Enrolled: Fall 1949 - 2010



▪ **Enrollment decreased after 1975 and has been on a slight increase since 2006**

Enrollment Trends

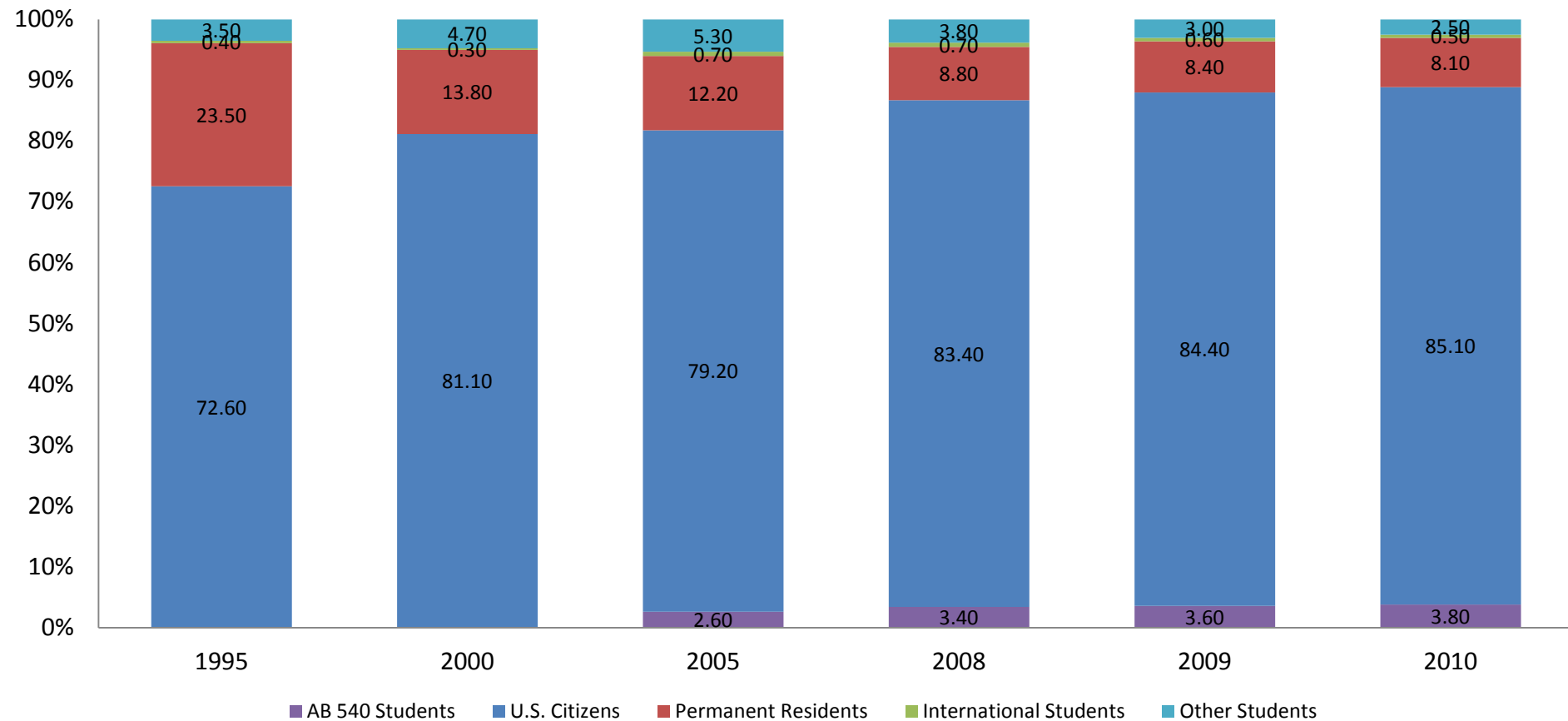
Enrolled by Age: Fall 2000 - 2010



- **Enrollment of age groups 20-24, 25-34 and 35+ have increased since 2004**

Enrollment Trends

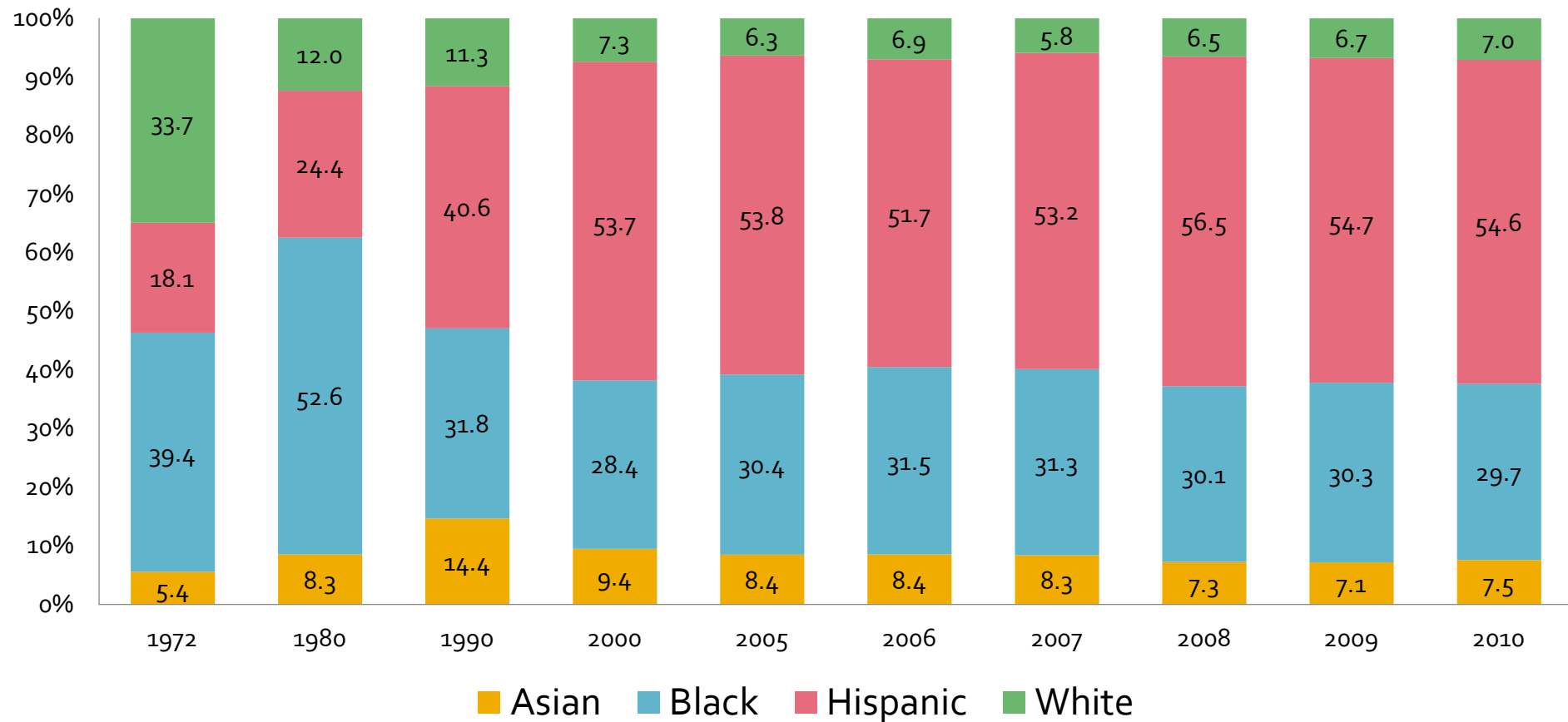
Enrolled by Citizenship: Fall 1995 - 2010



- Between 1995 to 2010, a majority of students were U.S. citizens and the number of permanent residents declined

Demographics Characteristics

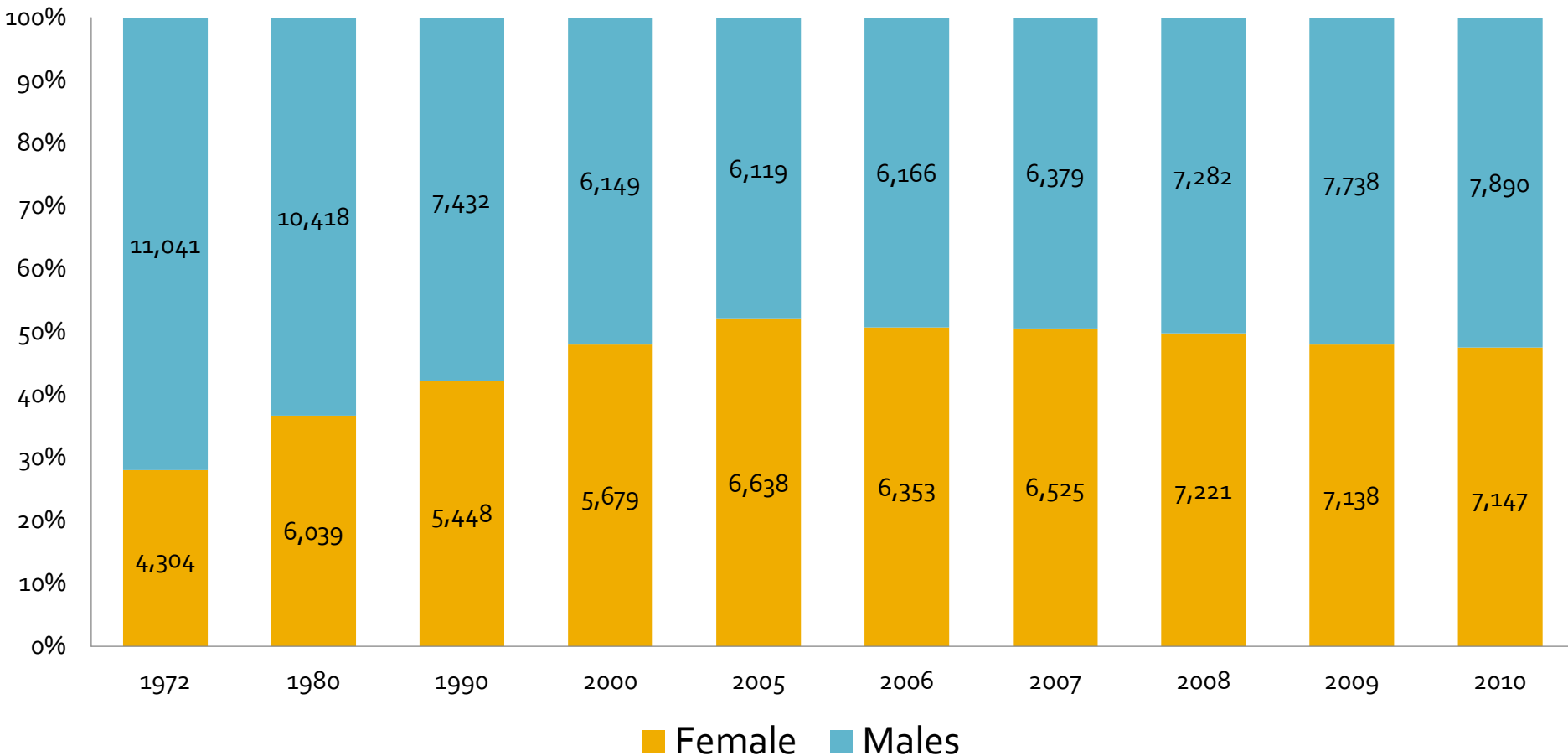
% Enrolled by Ethnicity: Fall 1972 - 2010



- **Since 1972, the number of Hispanics has greatly increased while the number of Blacks has decreased**

Demographics Characteristics

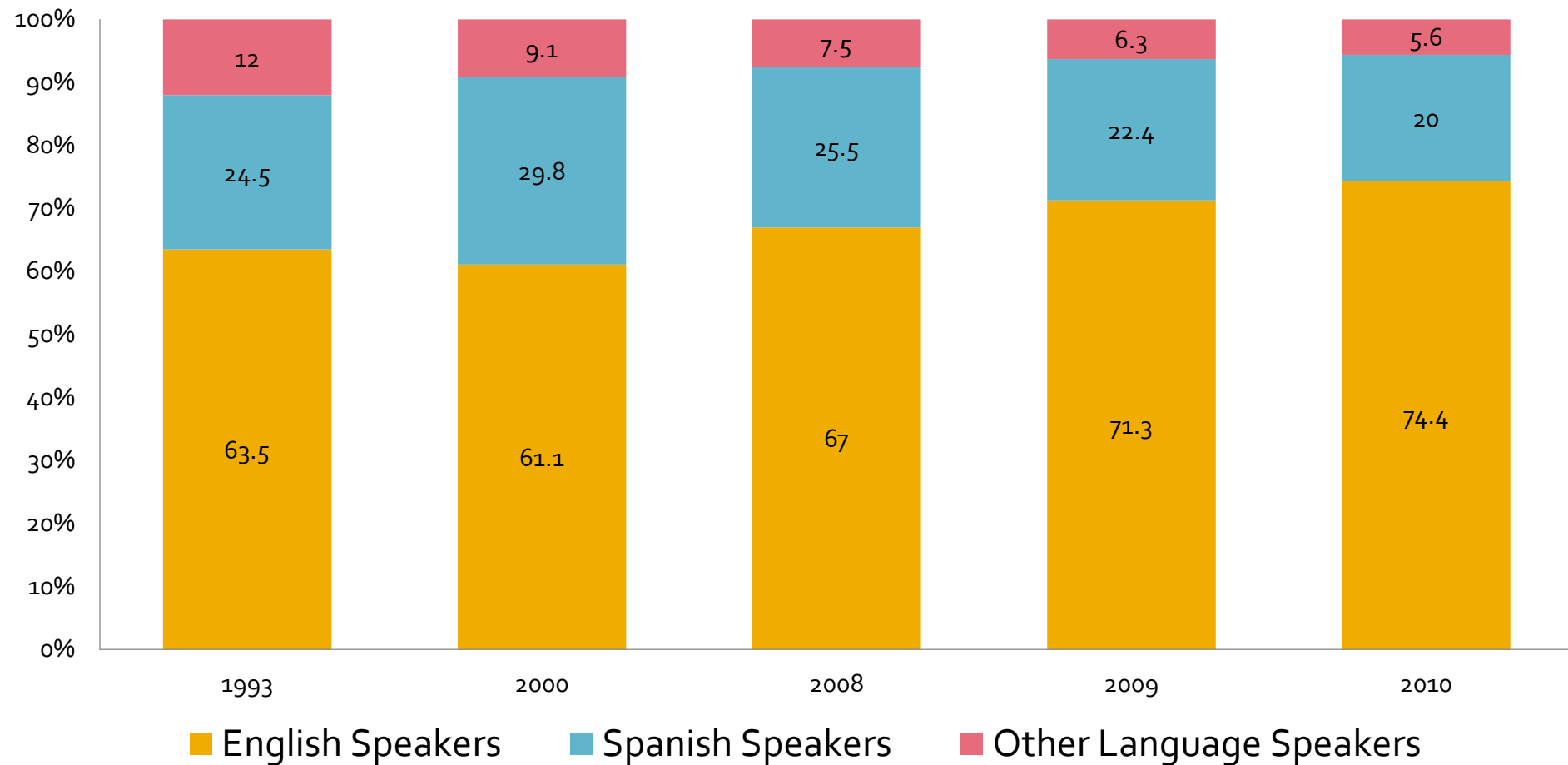
% Enrolled by Gender: Fall 1972 - 2010



- **The number of females at LATTC has increased since 1972**

Demographics Characteristics

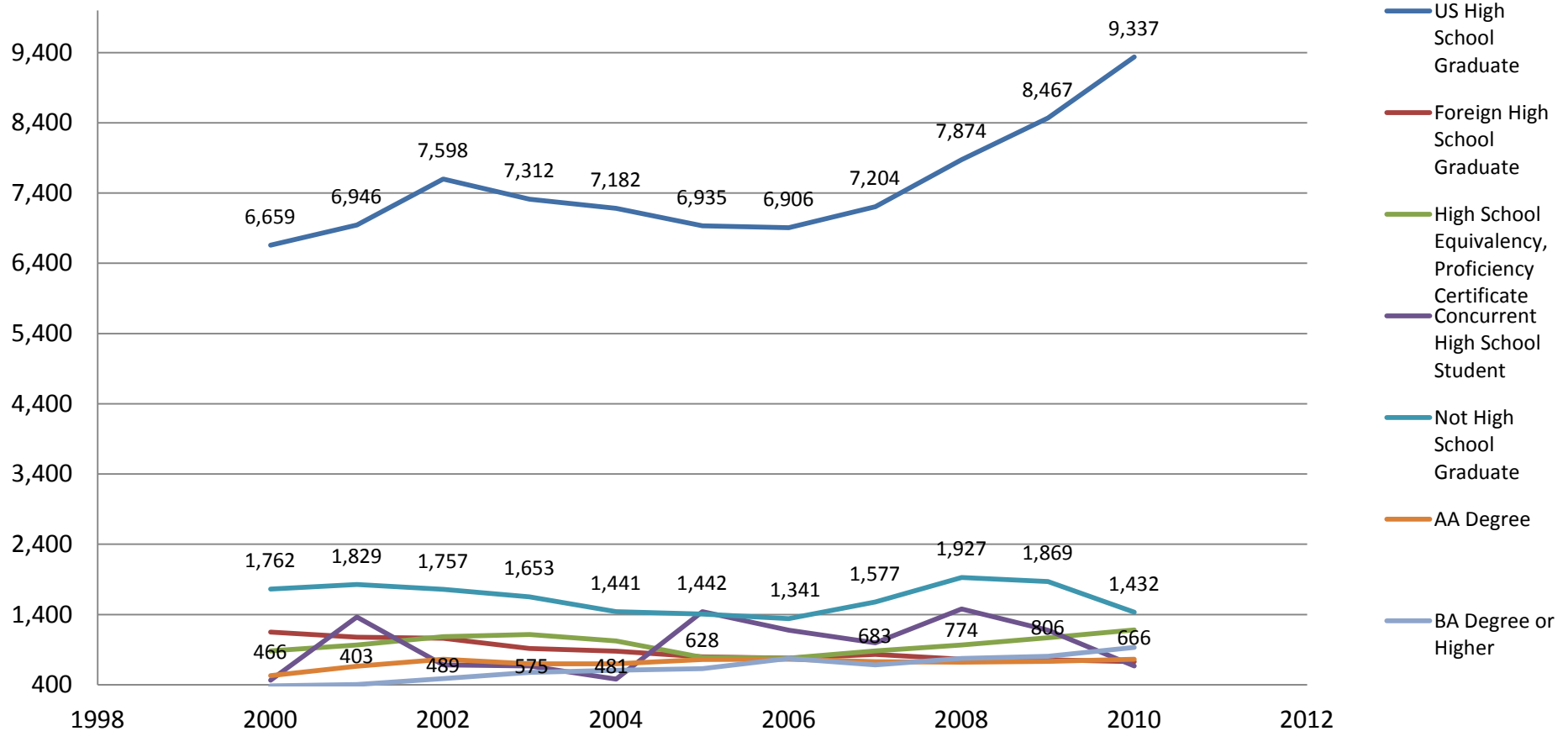
% Enrolled by Home Language: Fall 1993 - 2010



- **The number of Spanish speakers has decreased since 2000**

Demographics Characteristics

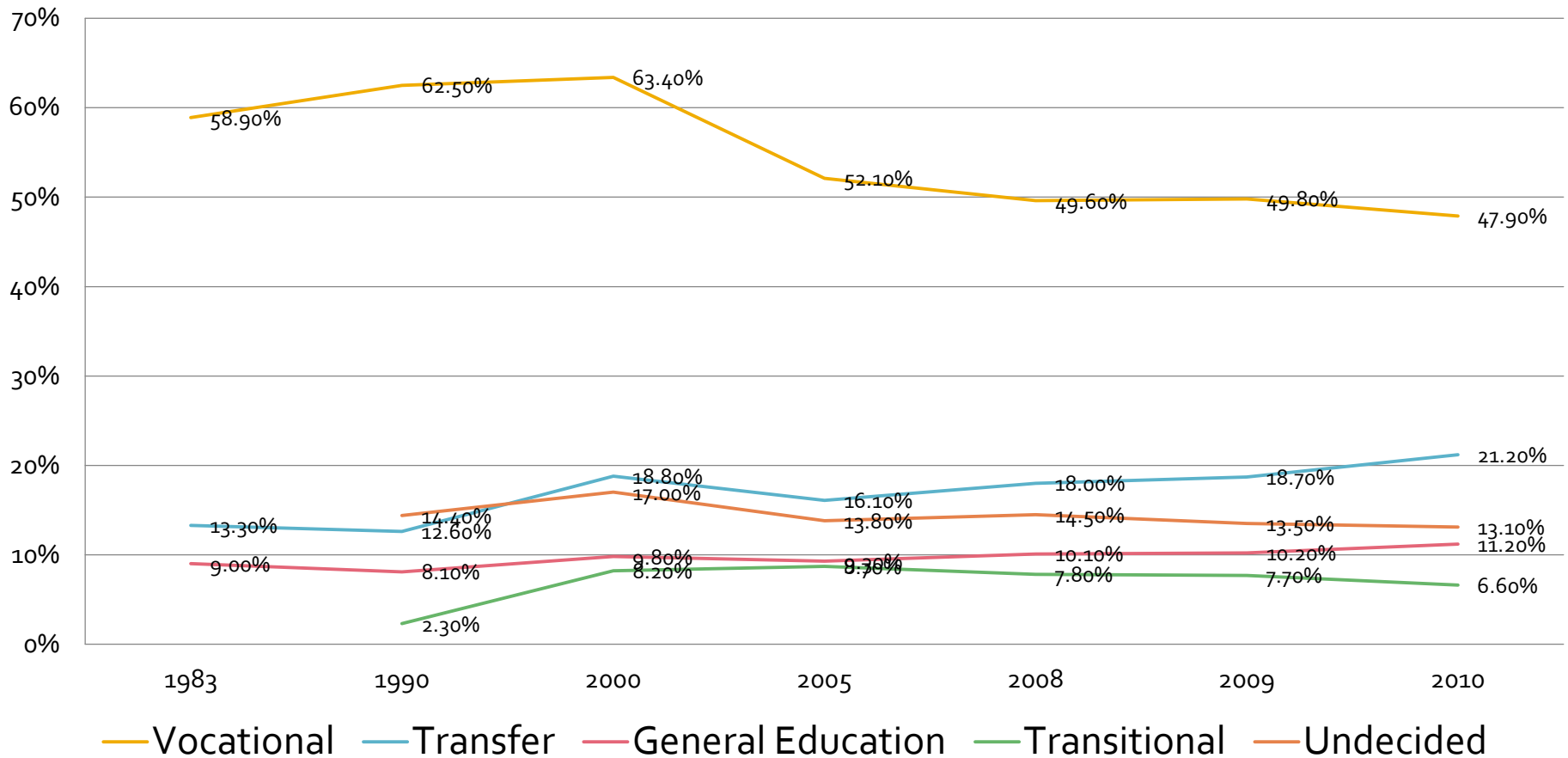
Enrolled by Educational Attainment: Fall 2000 - 2010



- U.S. high school graduates are the majority of students at LATTC and have increased since 2006**

Transfers

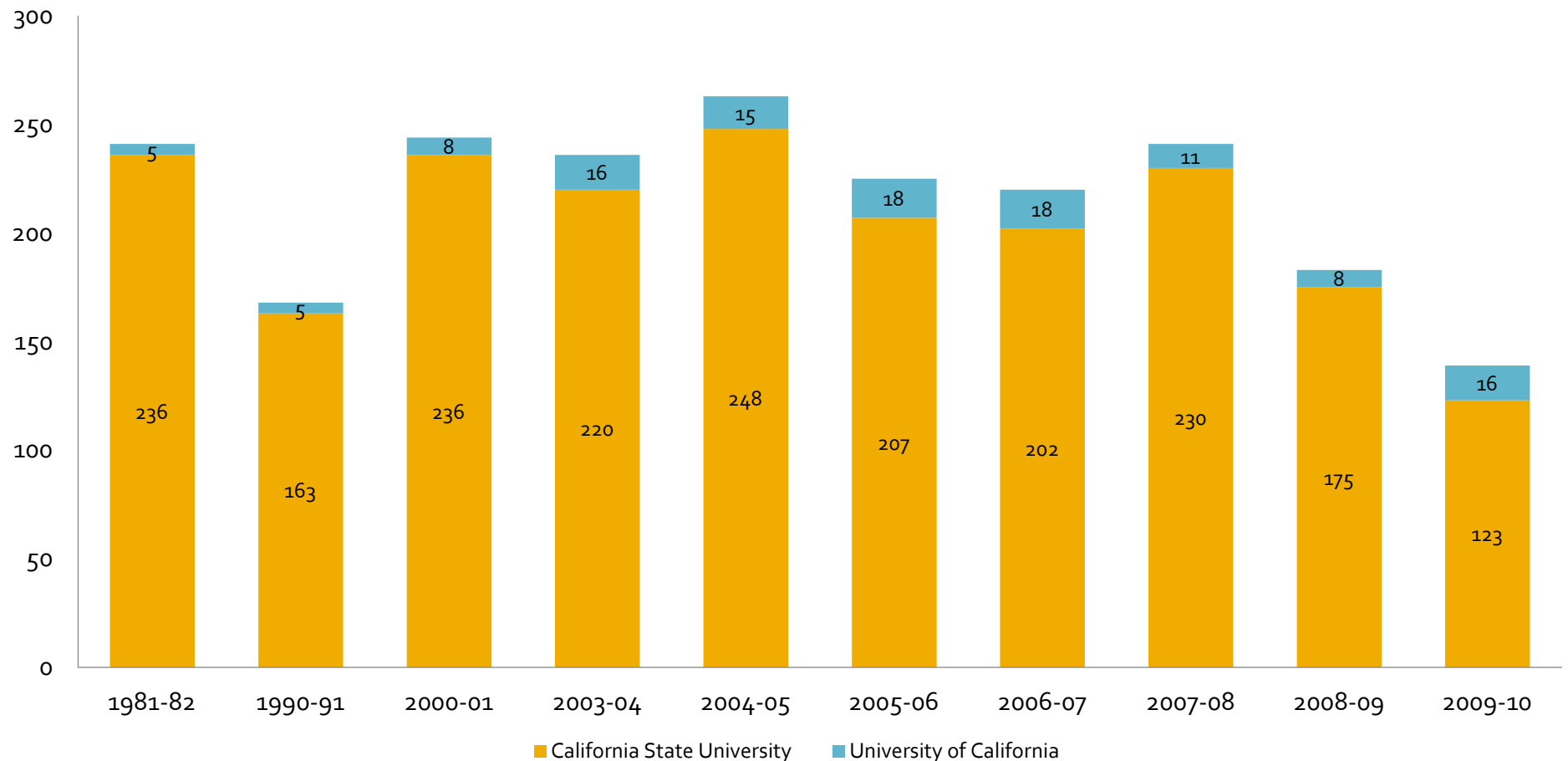
Enrolled by Educational Goal: Fall 1983 - 2010



- **The number of students who have a vocational goal has declined since 2000**

Transfers

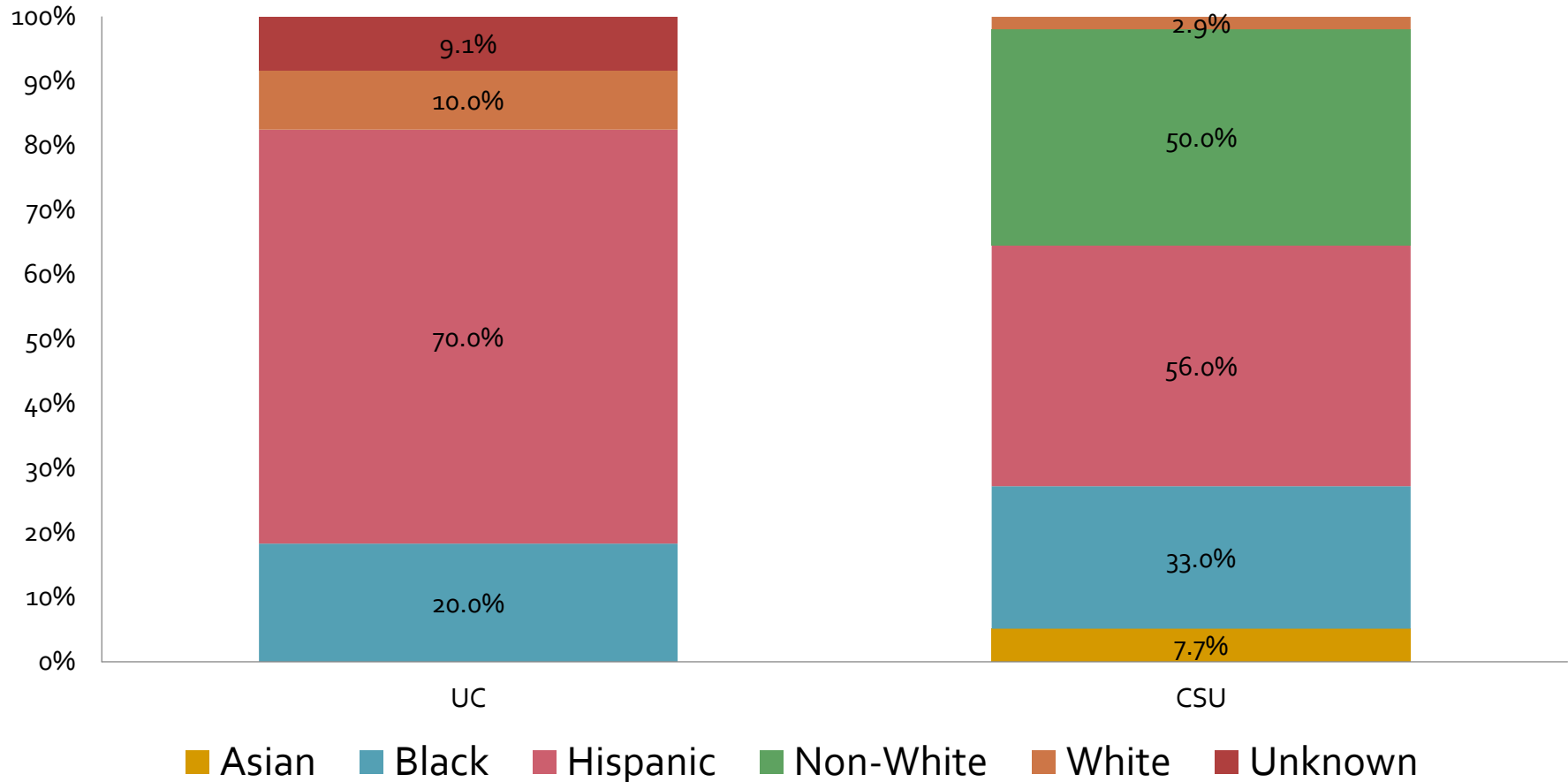
of Transfer Students to a UC or CSU: 1981 - 2010



▪ **From 1981 to 2010, more students transferred to a CSU than a UC**

Transfers

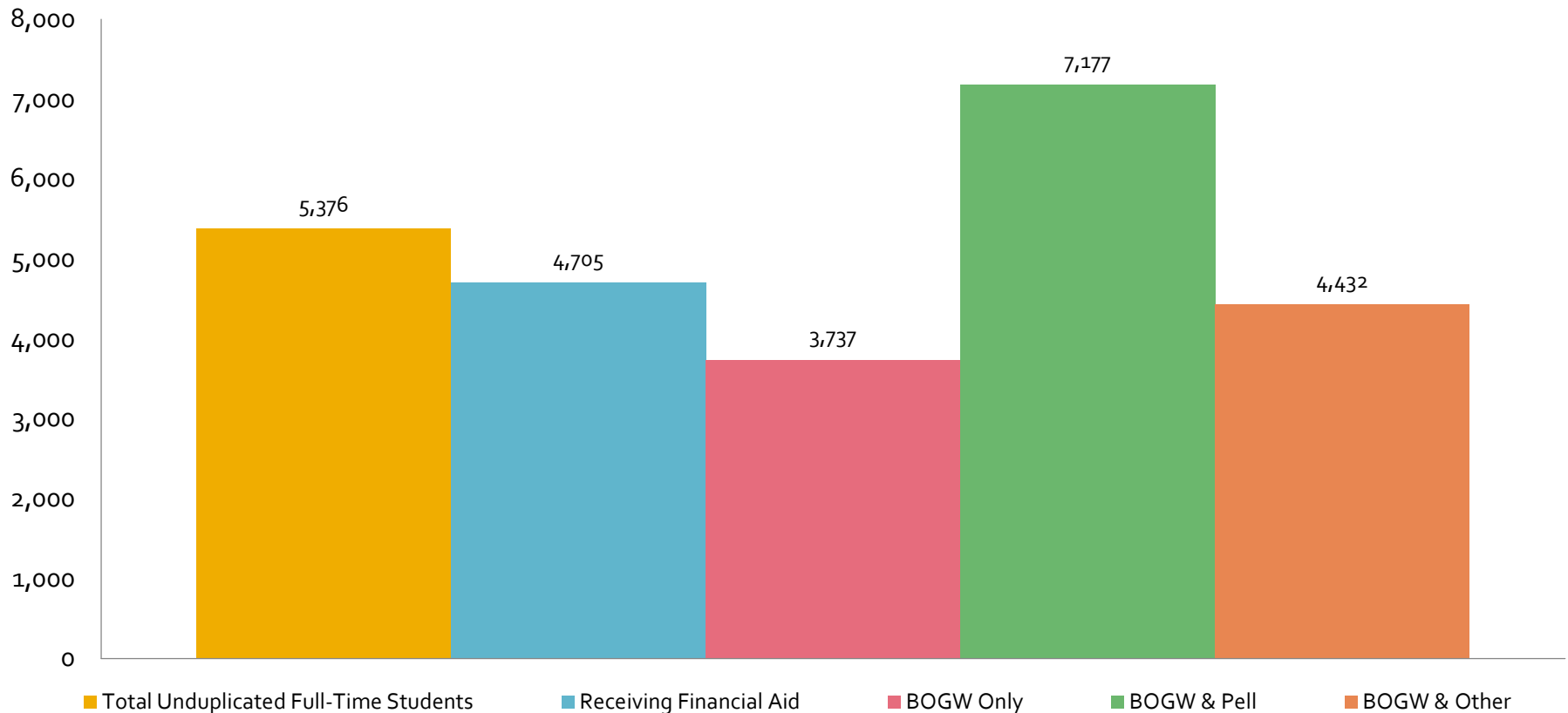
% of Transfers by Ethnicity: 2007 - 2008



- In 2007, Hispanics were the largest ethnic group to transfer to both a UC and a CSU**

Financial Aid

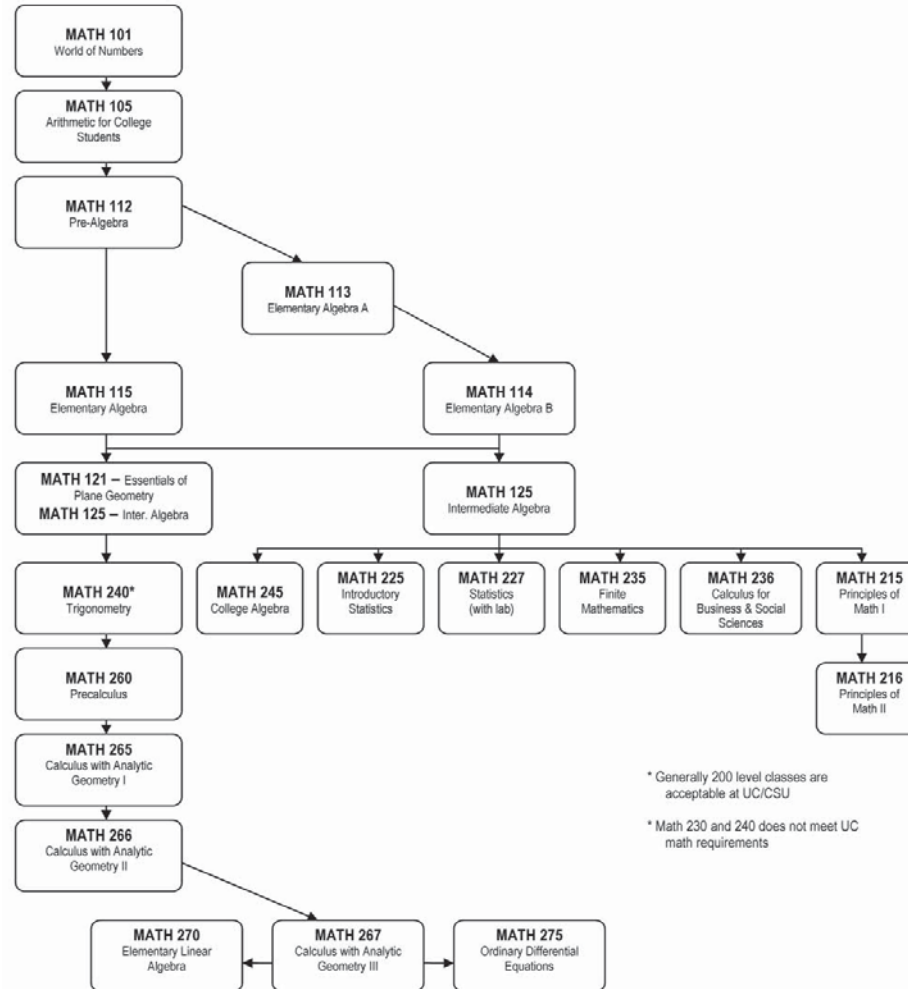
of Students Receiving Financial Aid 2007-2008 Academic Year



▪ **Approximately 88% of full-time students received financial aid**

Math Sequence

Course Sequence in Mathematics



Note: Math Competency Exam given each semester. Meets elementary Algebra graduation requirements. Contact the Math Department at (213) 763-7330.

27 Aug 09