

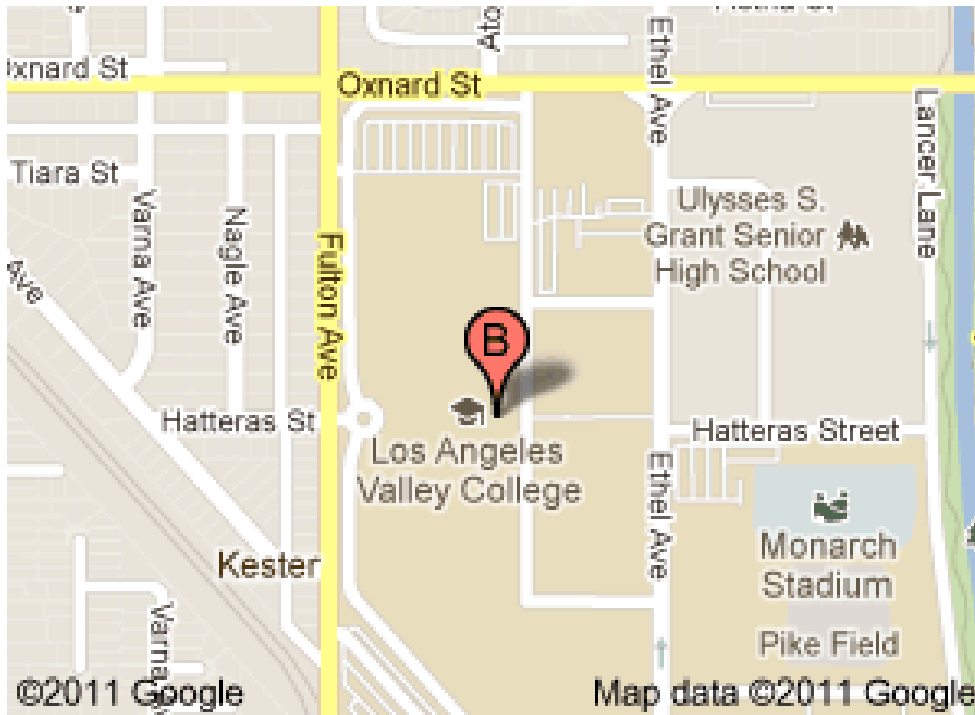


Los Angeles Valley College

Content

- **Introduction**
- **Enrollment Trends**
- **Demographic Characteristics**
- **Transfers**
- **Financial Aid**
- **Math Sequence**

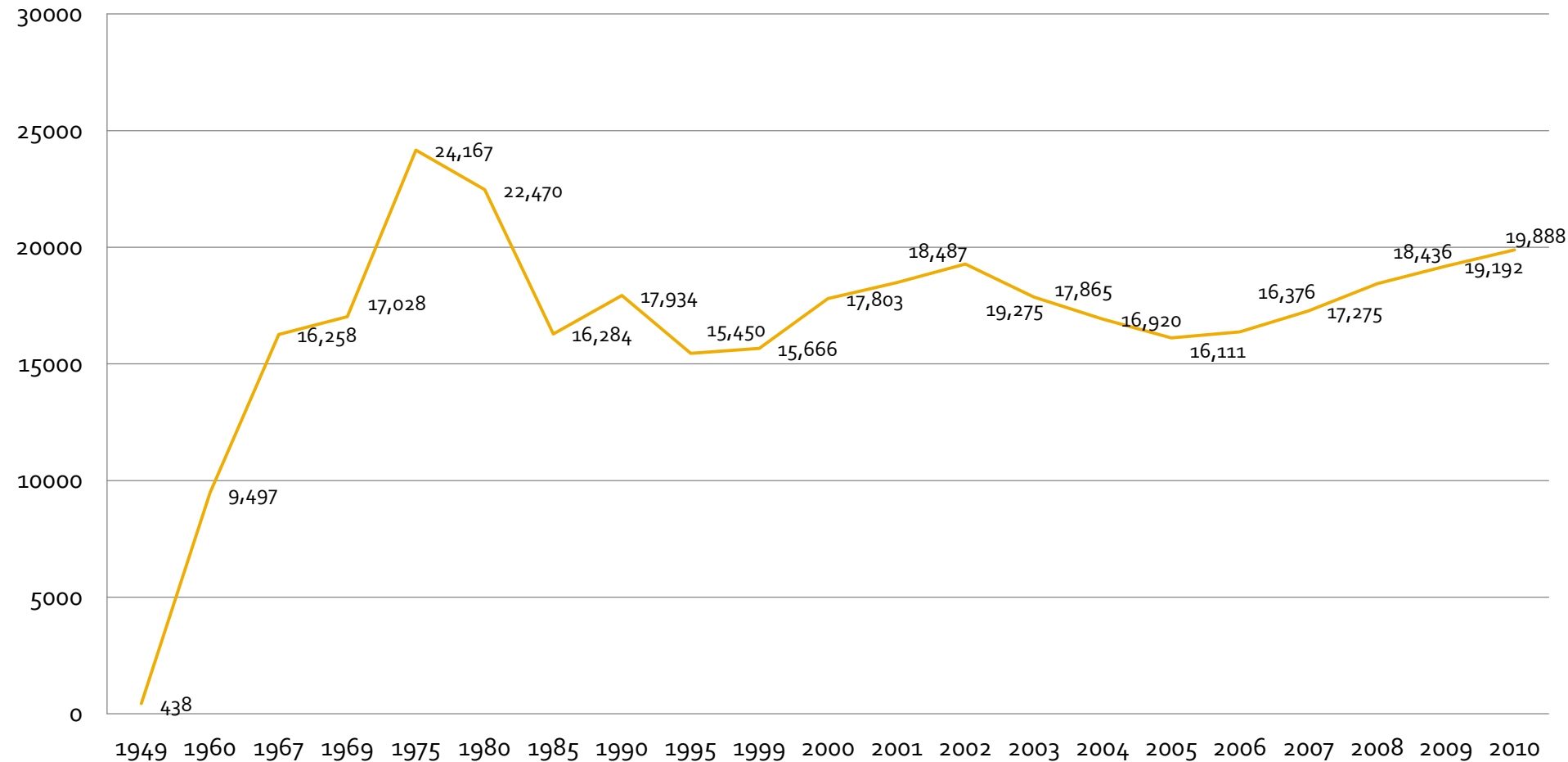
Introduction



- **Los Angeles Valley College is a 2-year public college located in the heart of Los Angeles's San Fernando Valley.**
- **Website: www.lavc.edu**

Enrollment Trends

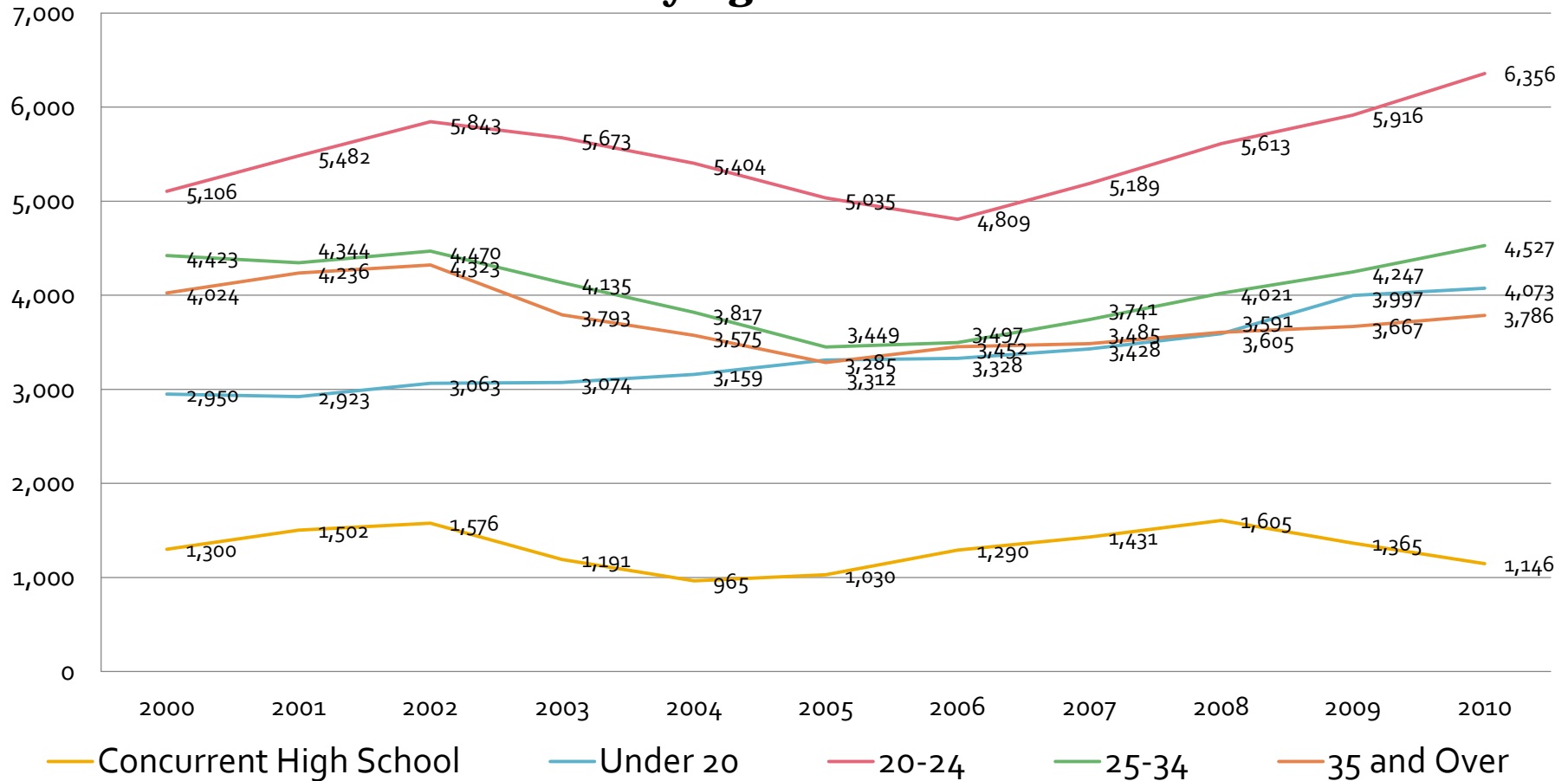
Enrolled: Fall 1949 - 2009



- **Enrollment increased from 1949 to 1975 and has fluctuated since then. 4**

Enrollment Trends

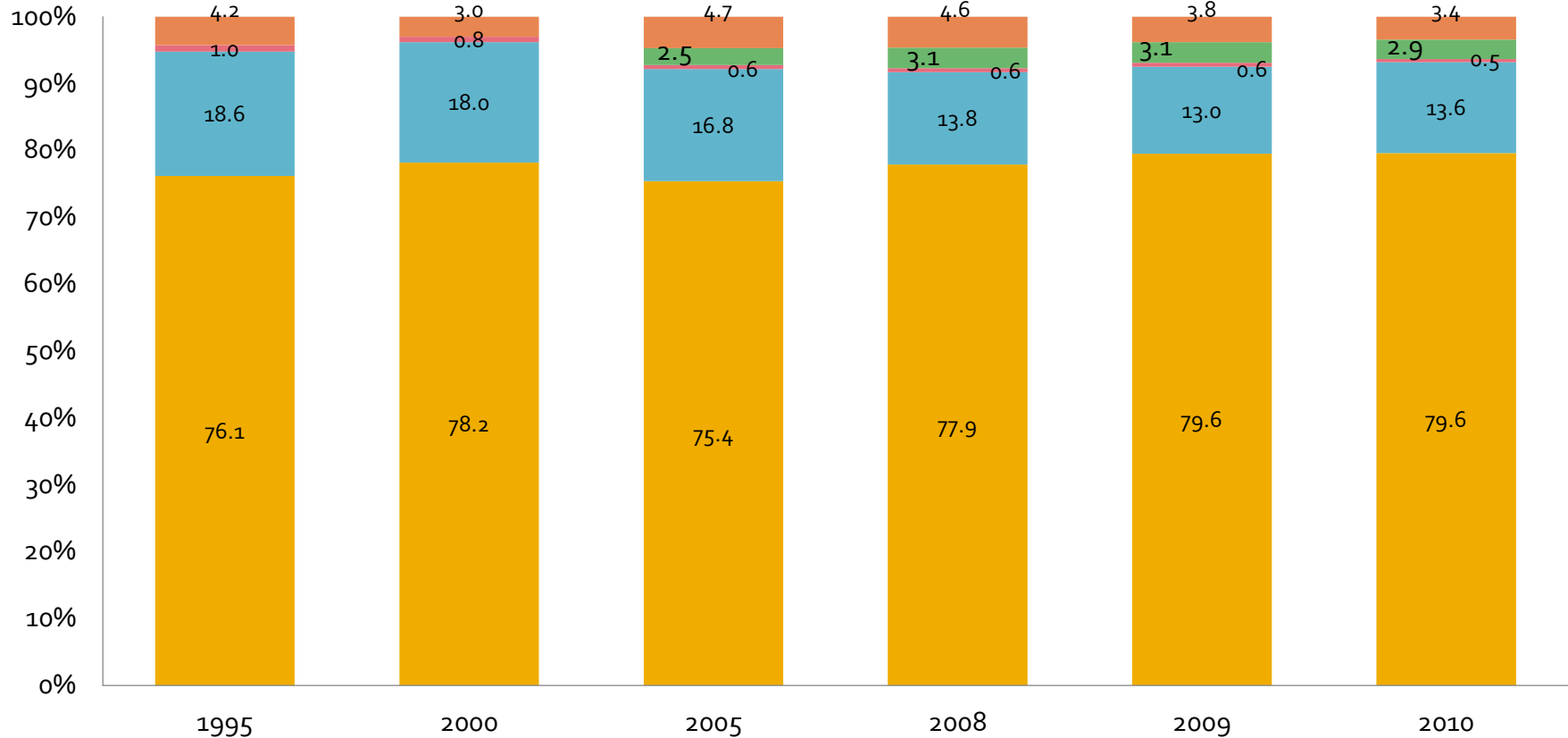
Enrolled by Age: Fall 2000 - 2010



- Enrollment decreased in most age groups from 2002 to 2006 and have since been on an upward trend

Demographics Characteristics

% Enrolled by Citizenship: Fall 1995 - 2010

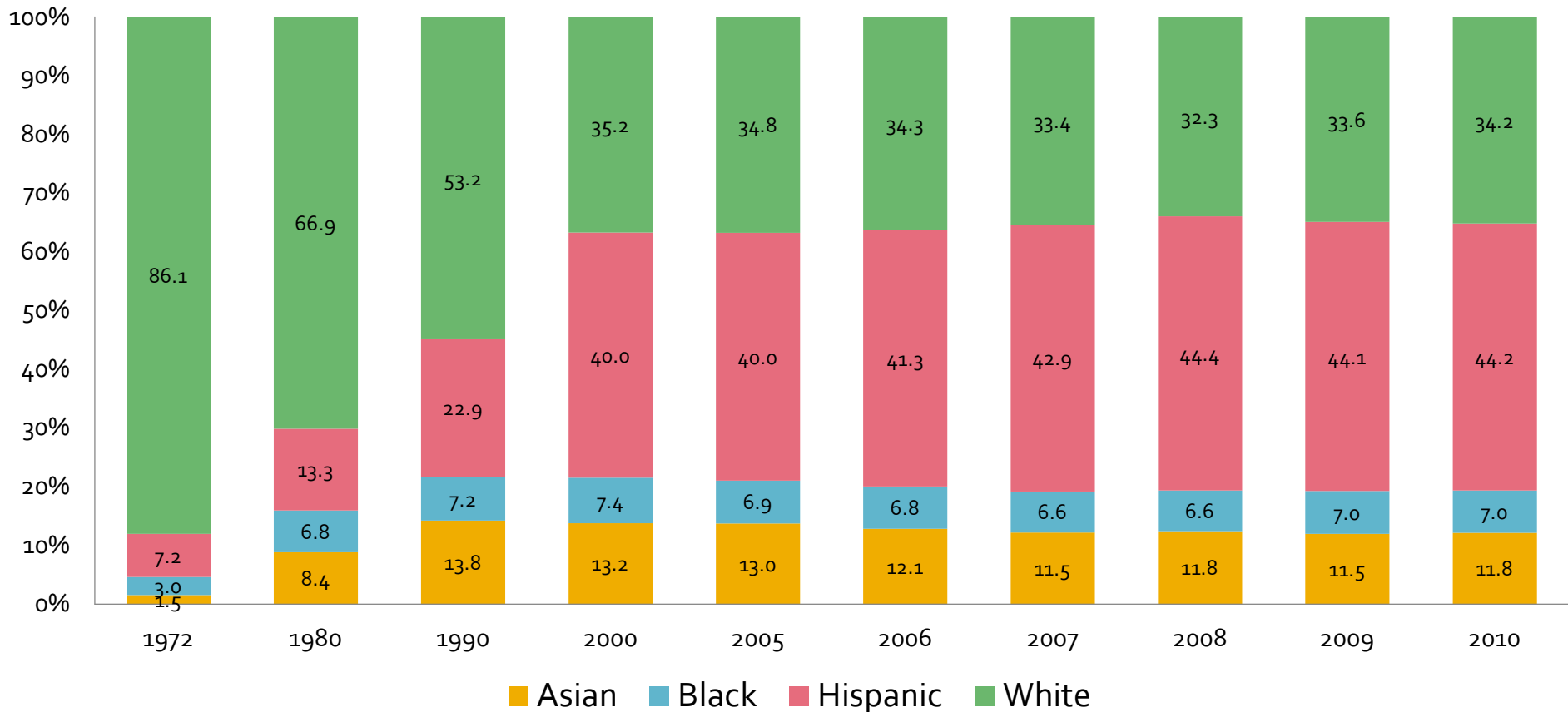


■ U.S. Citizens
 ■ Permanent Residents
 ■ International Students
 ■ AB 540 Students
 ■ Other Students

- Enrollment of U.S. citizens has remained relatively stable while the number of enrollment of permanent residents has decreased**

Demographics Characteristics

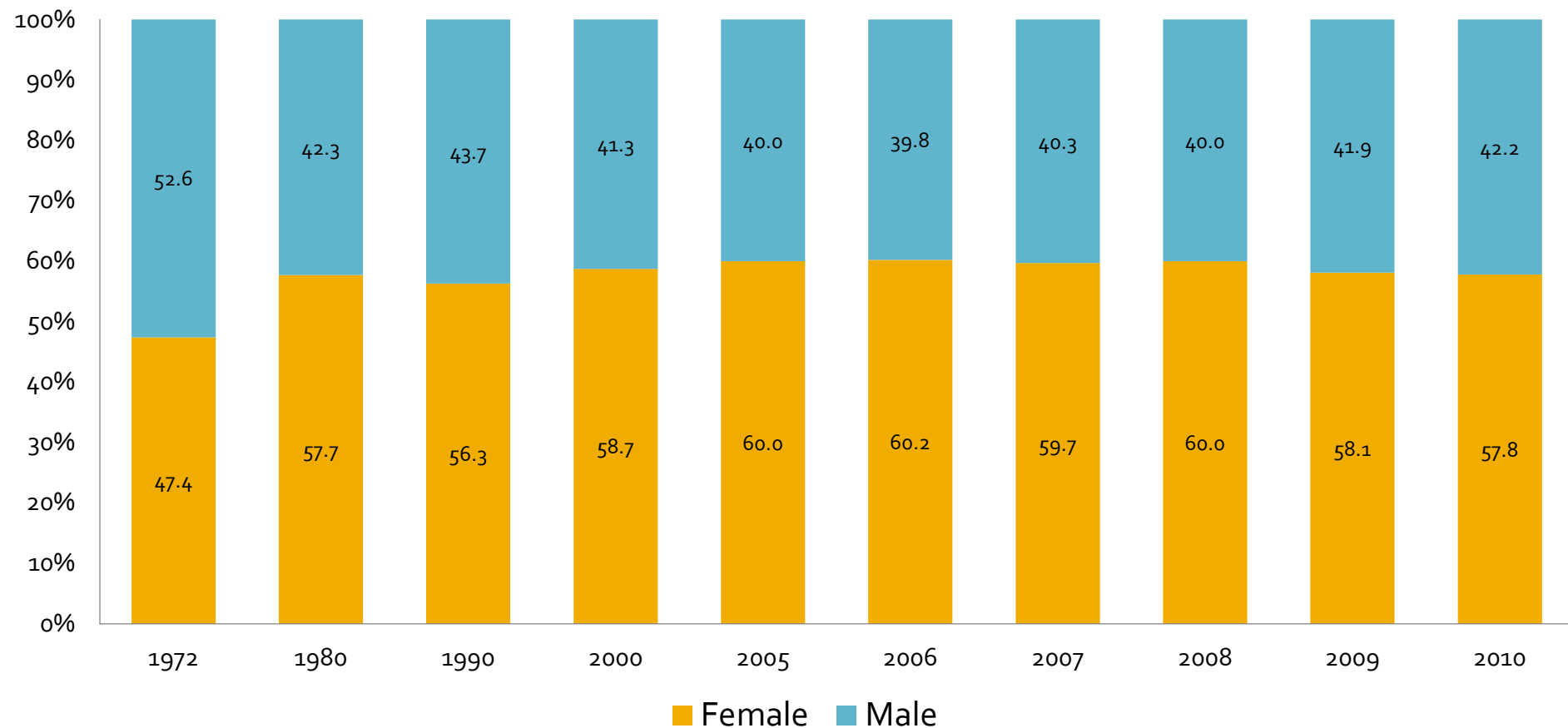
% Enrolled by Ethnicity: Fall 1972 - 2010



- The number of Whites have decreased dramatically since 1972 and Hispanics have become the largest ethnic student group**

Demographics Characteristics

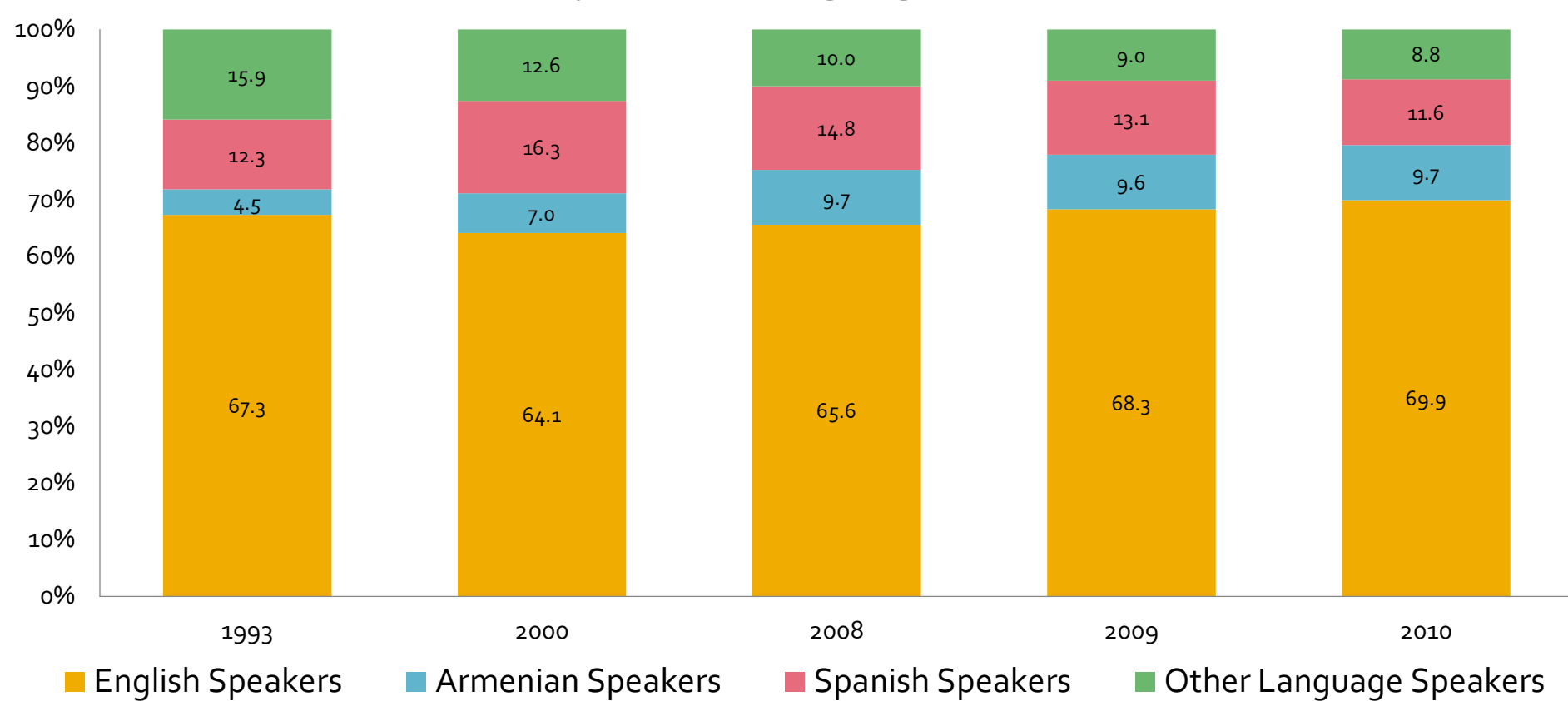
% Enrolled by Gender: Fall 1972 - 2010



- **Between 1972 and 2010, females have become the larger proportion of students in the college**

Demographics Characteristics

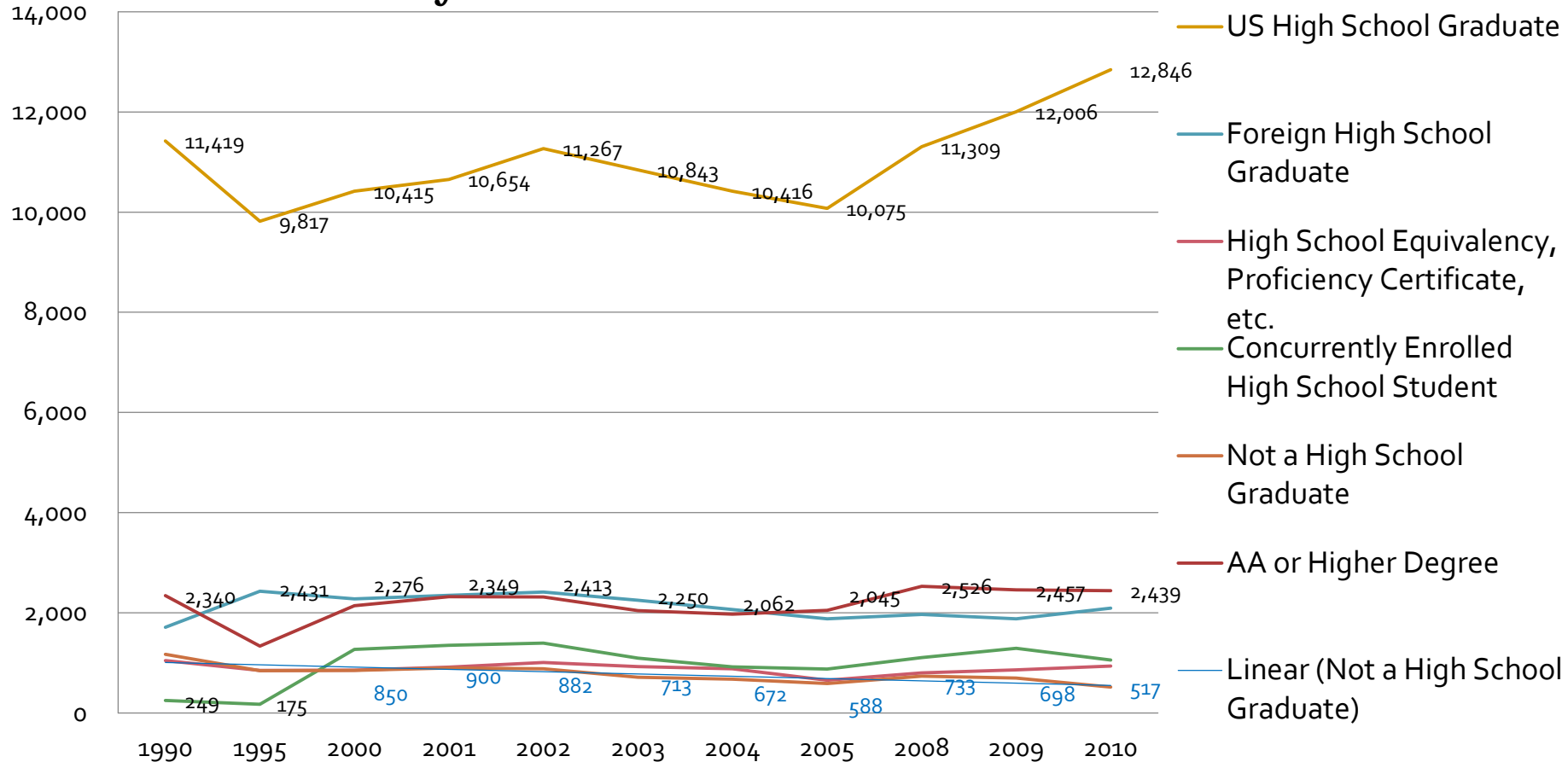
% Enrolled by Home Language: Fall 1993 - 2010



- **The number of English speakers has slightly increased while the number of Spanish speakers has decreased.**

Demographics Characteristics

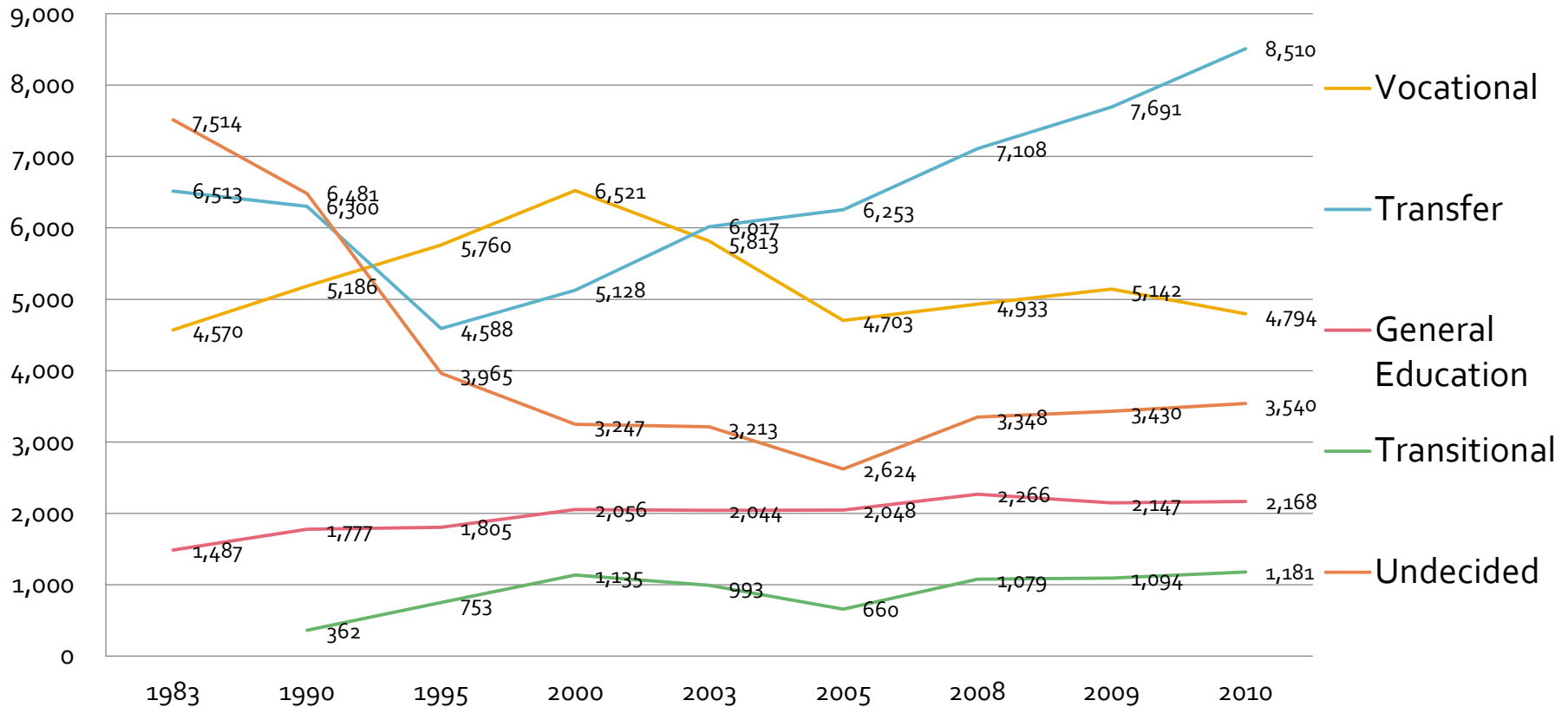
Enrolled by Educational Attainment: Fall 1990 - 2010



- The majority of LAVC students were U.S. high school graduates and the number has continued to increase**

Transfers

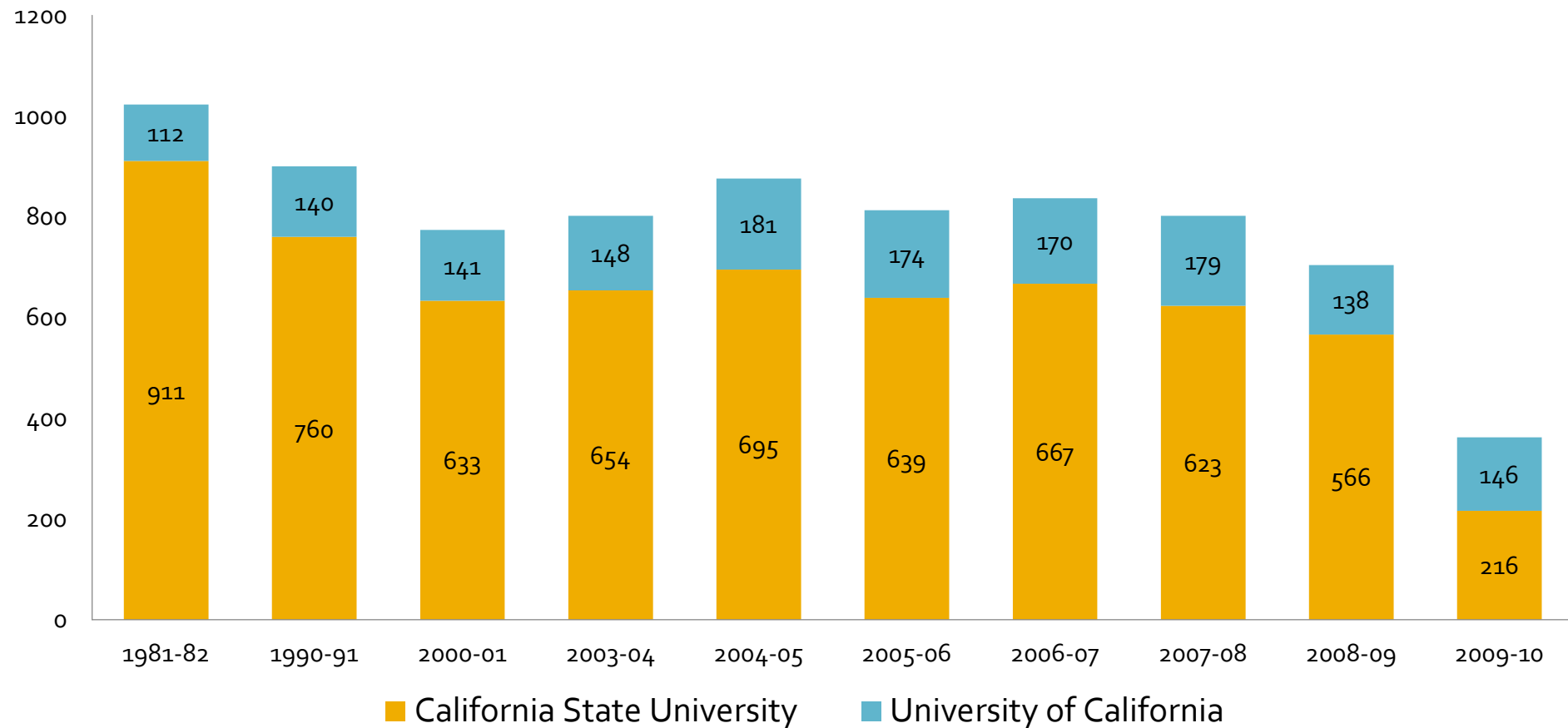
Enrolled by Educational Goal: Fall 1983 - 2010



- Since 1995, an increasing number of students expressed an interest to transfer

Transfers

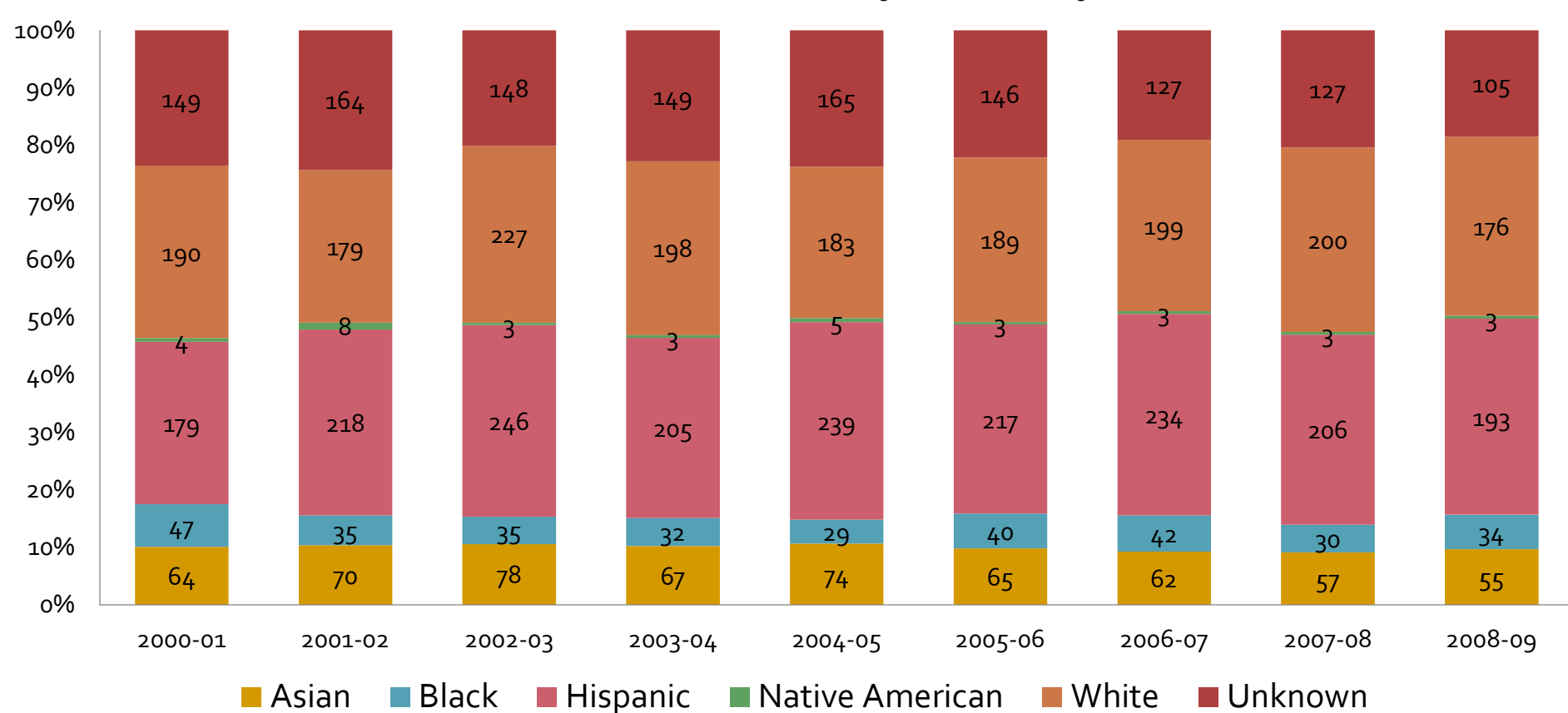
of Transfer Students to a UC or CSU: 1981 - 2010



▪ **Between 1981 to 2010, a majority of students transferred to a CSU**

Transfers

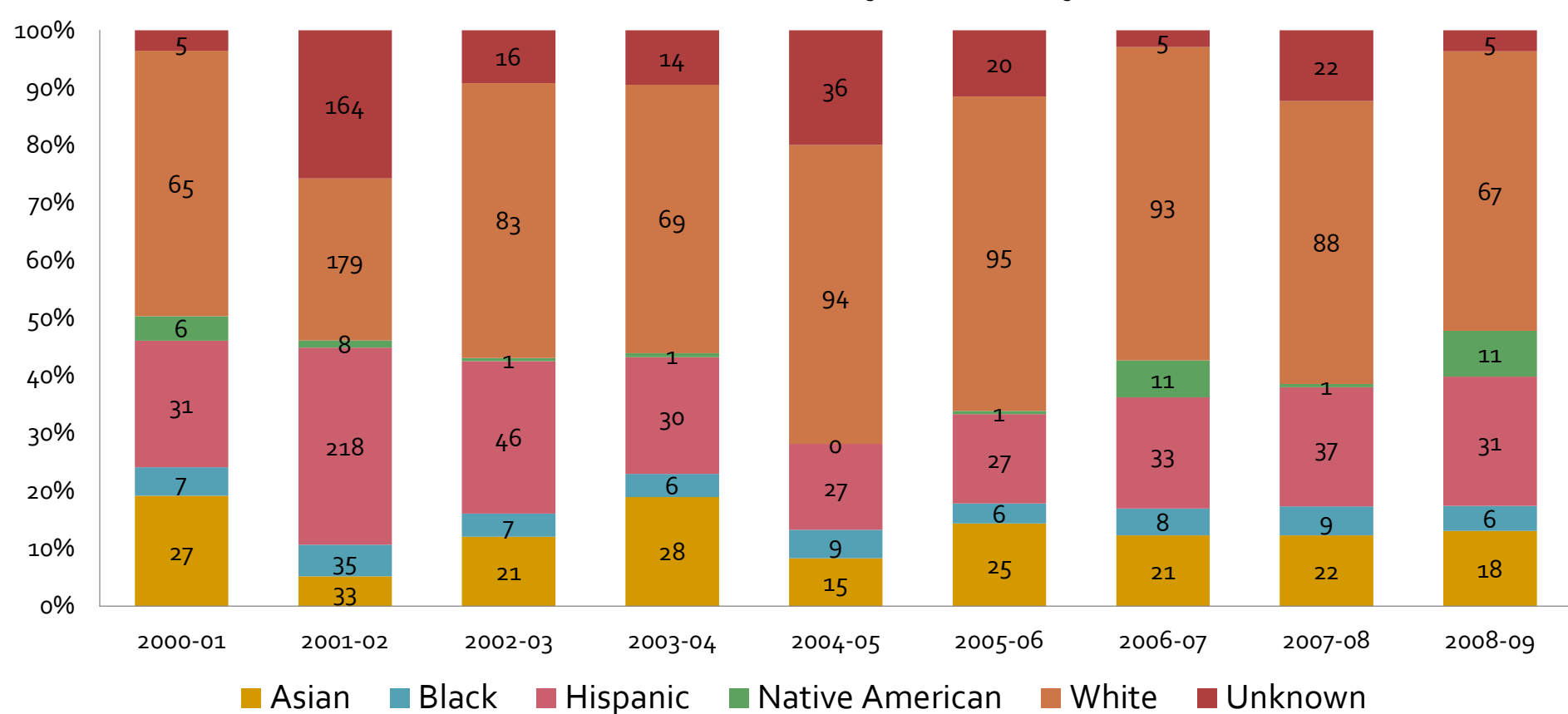
of Transfer Students to CSU by Ethnicity: 2000 - 2009



Between 2000 to 2009, the largest ethnic group to transfer to a CSU was Hispanics

Transfers

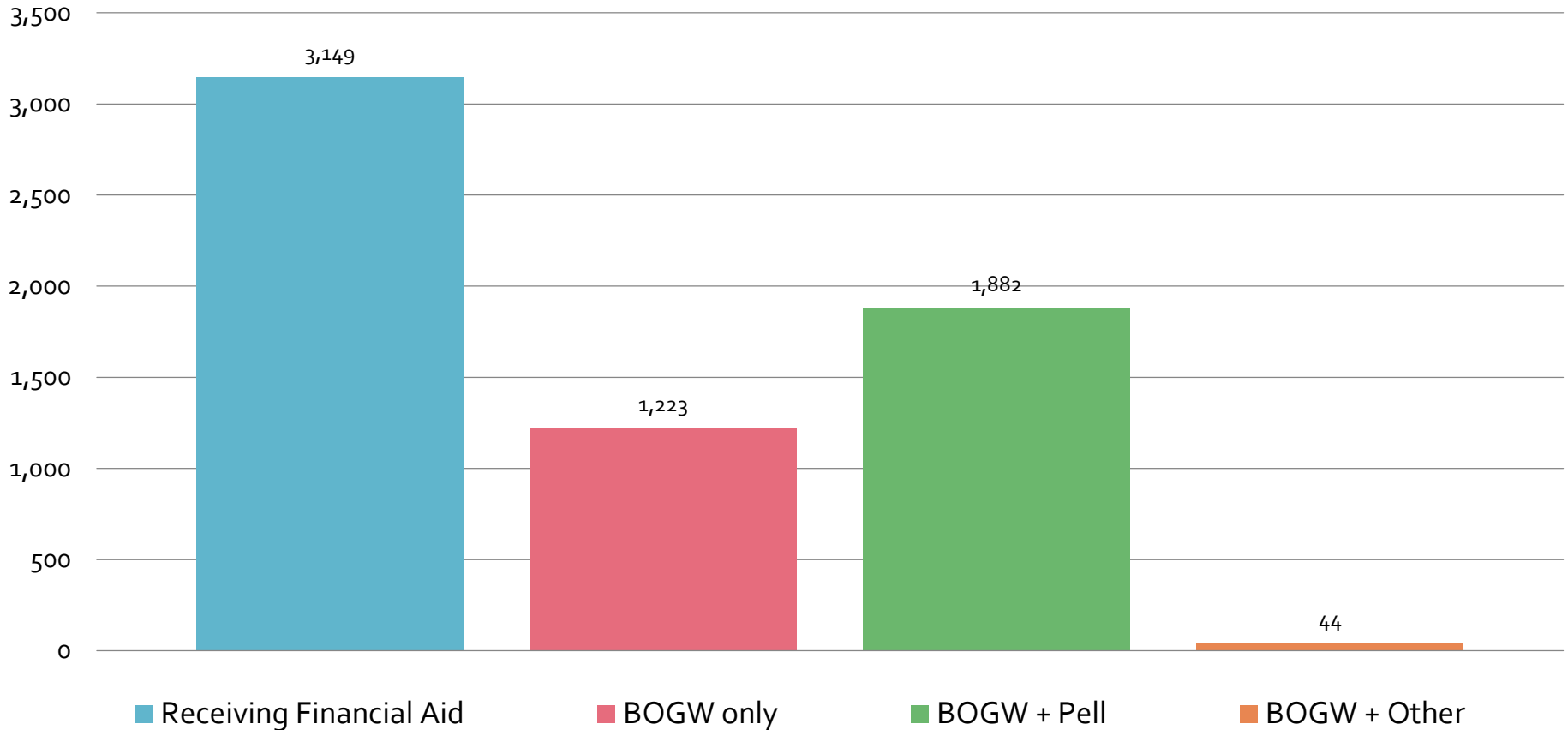
of Transfer Students to UC by Ethnicity: 2000 - 2009



Between 2000 to 2009, the largest ethnic group to transfer to a UC was Whites

Financial Aid

of Full-Time Students Receiving Financial Aid 2007-2008 Academic Year



▪ **In 2007, most full-time students received financial aid**

Math Sequence

