

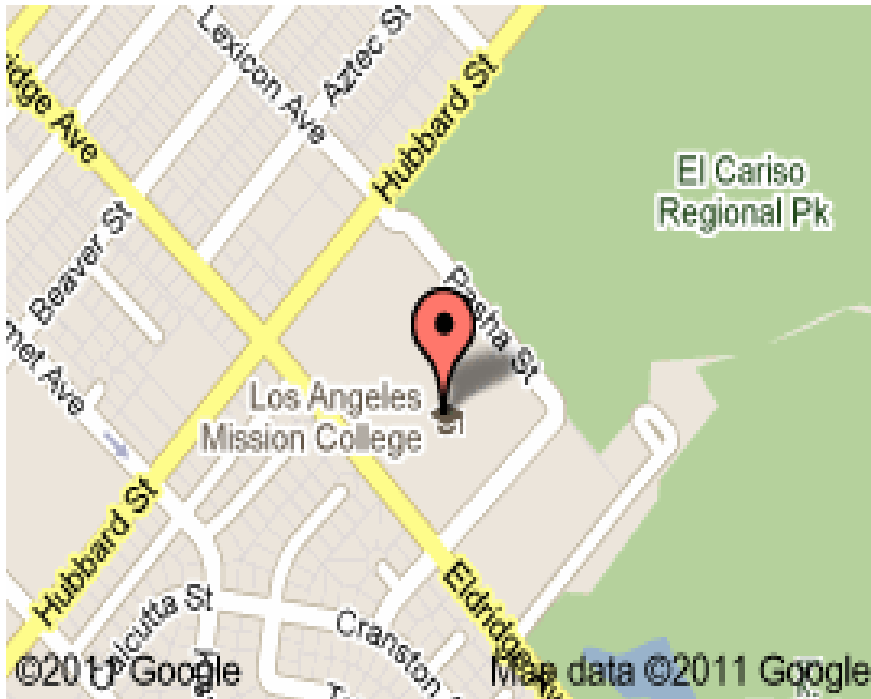


Los Angeles Mission College

Content

- **Introduction**
- **Enrollment Trends**
- **Demographic Characteristics**
- **Transfers**
- **Financial Aid**
- **Math Sequence**

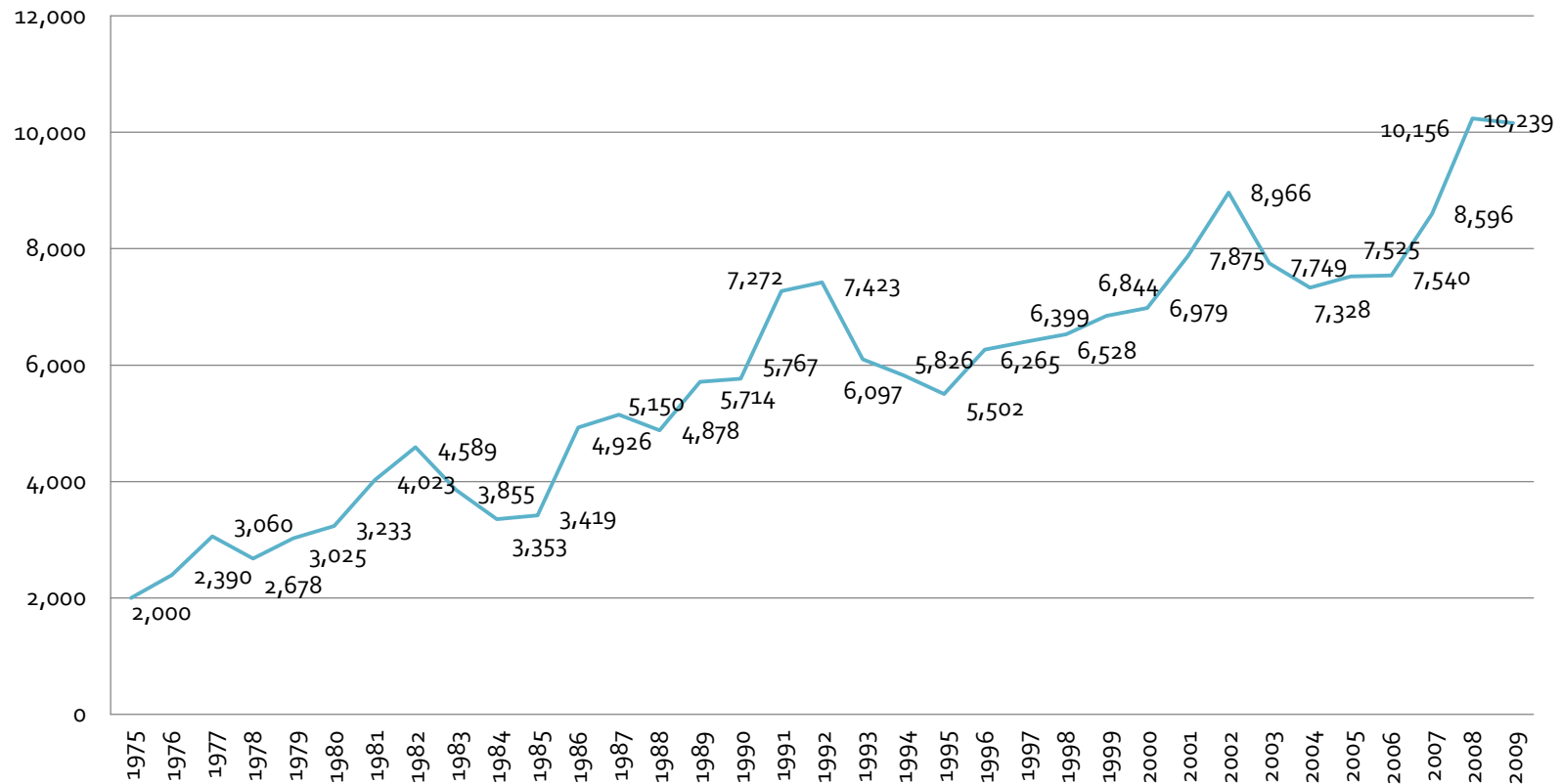
Introduction



- **Mission College is located in Sylmar and has strong, historical ties to its neighboring communities of San Fernando, Pacoima, Mission Hills, North Hills, Panorama City and Granada Hills.**
- **Website: www.lamission.edu**

Enrollment Trends

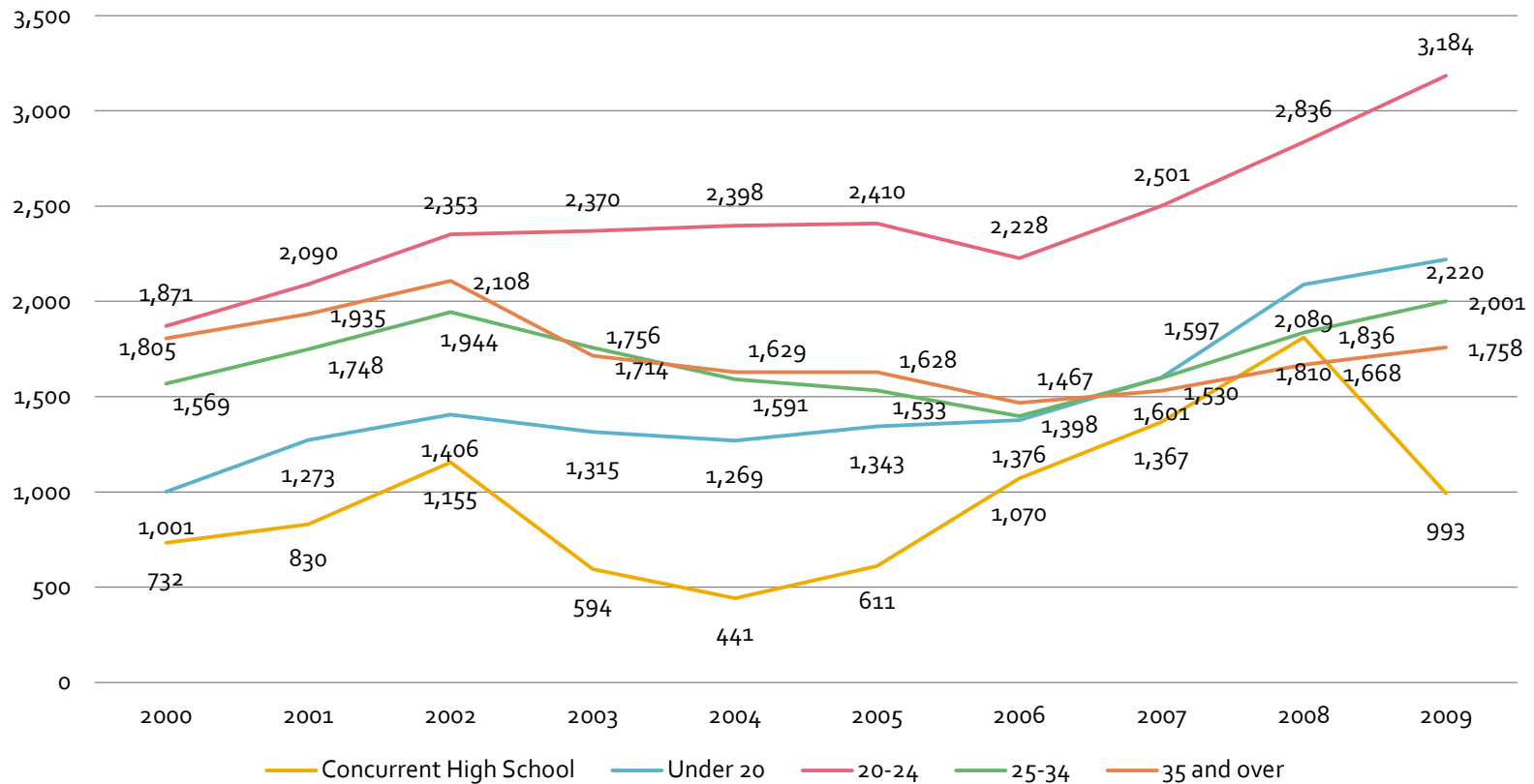
Enrolled: Fall 1975 - 2009



- **Steady increase in students**
- **Slight decrease in students from 2002 - 2007**

Enrollment Trends

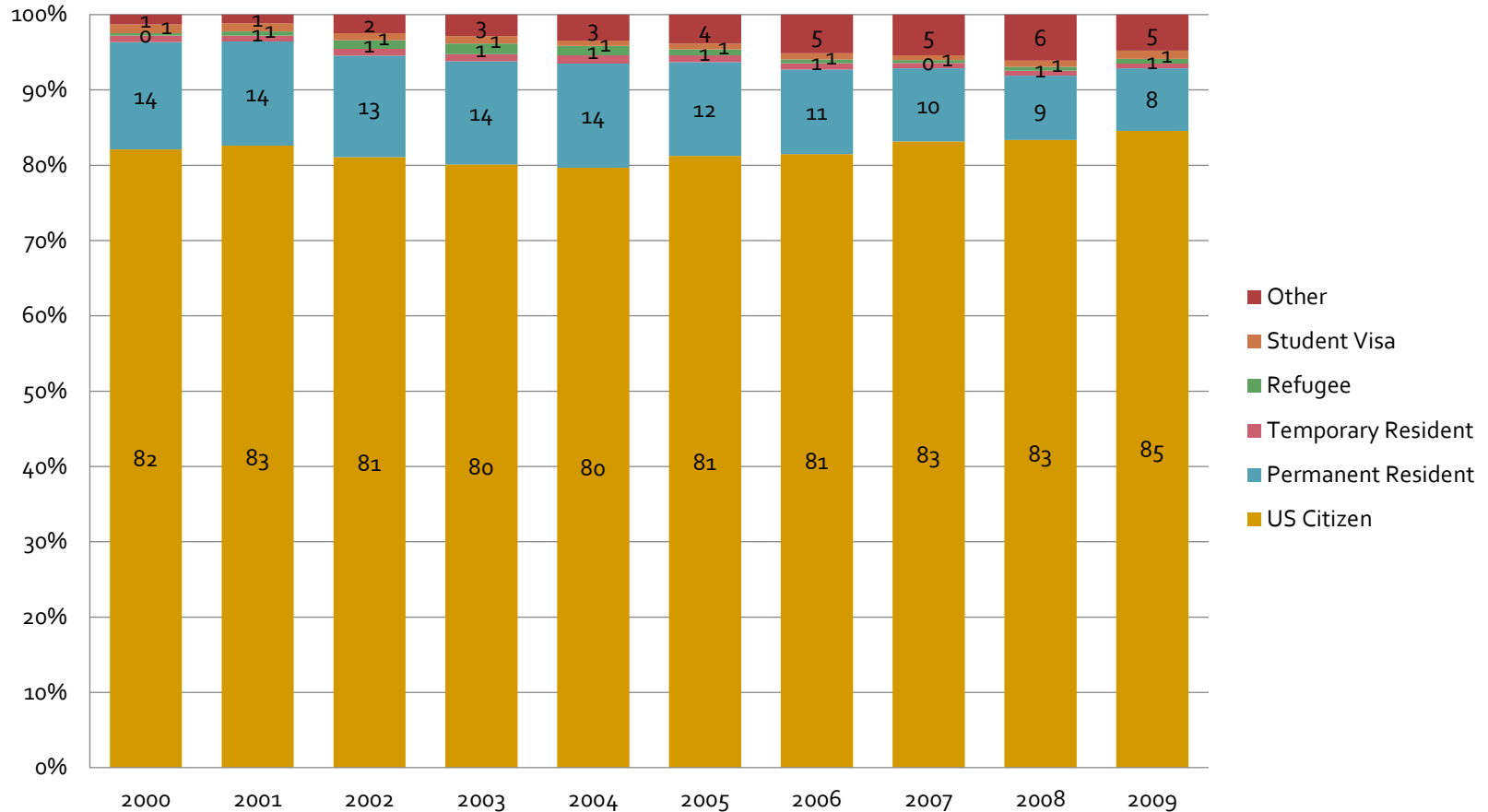
Enrolled by Age: Fall 2000 - 2009



- Majority of the students enrolled are of the ages 20-24

Demographics Characteristics

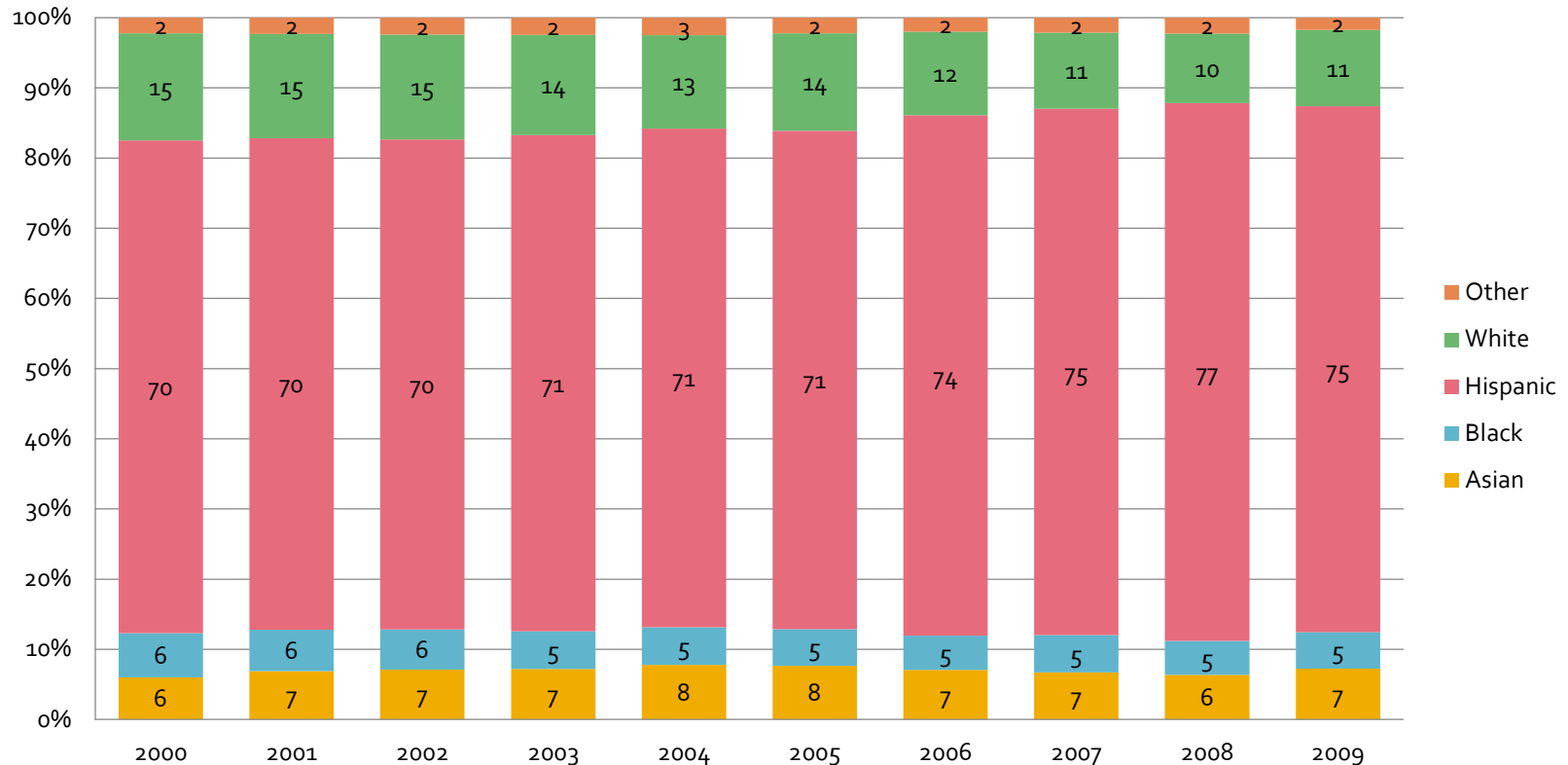
% Enrolled by Citizenship: Fall 2000 - 2009



- **Stable enrollment trends by citizenship**
- **Majority are U.S. citizens**

Demographics Characteristics

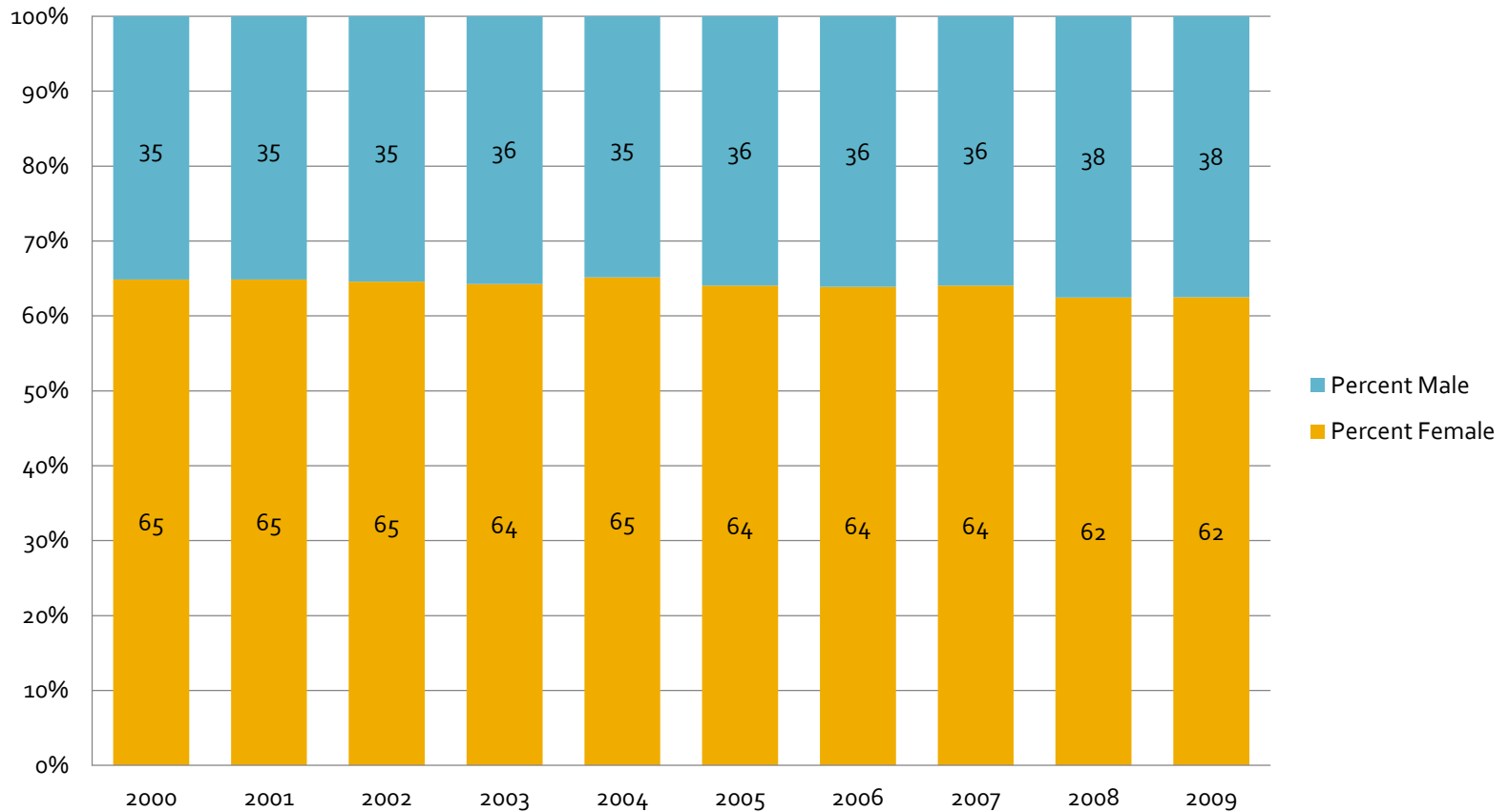
% Enrolled by Ethnicity: Fall 2000 - 2009



- **Approximately 70-75% of the students are Hispanic**
- **White are approximately 10-15%**
- **Black and Asian are both under 10%**

Demographics Characteristics

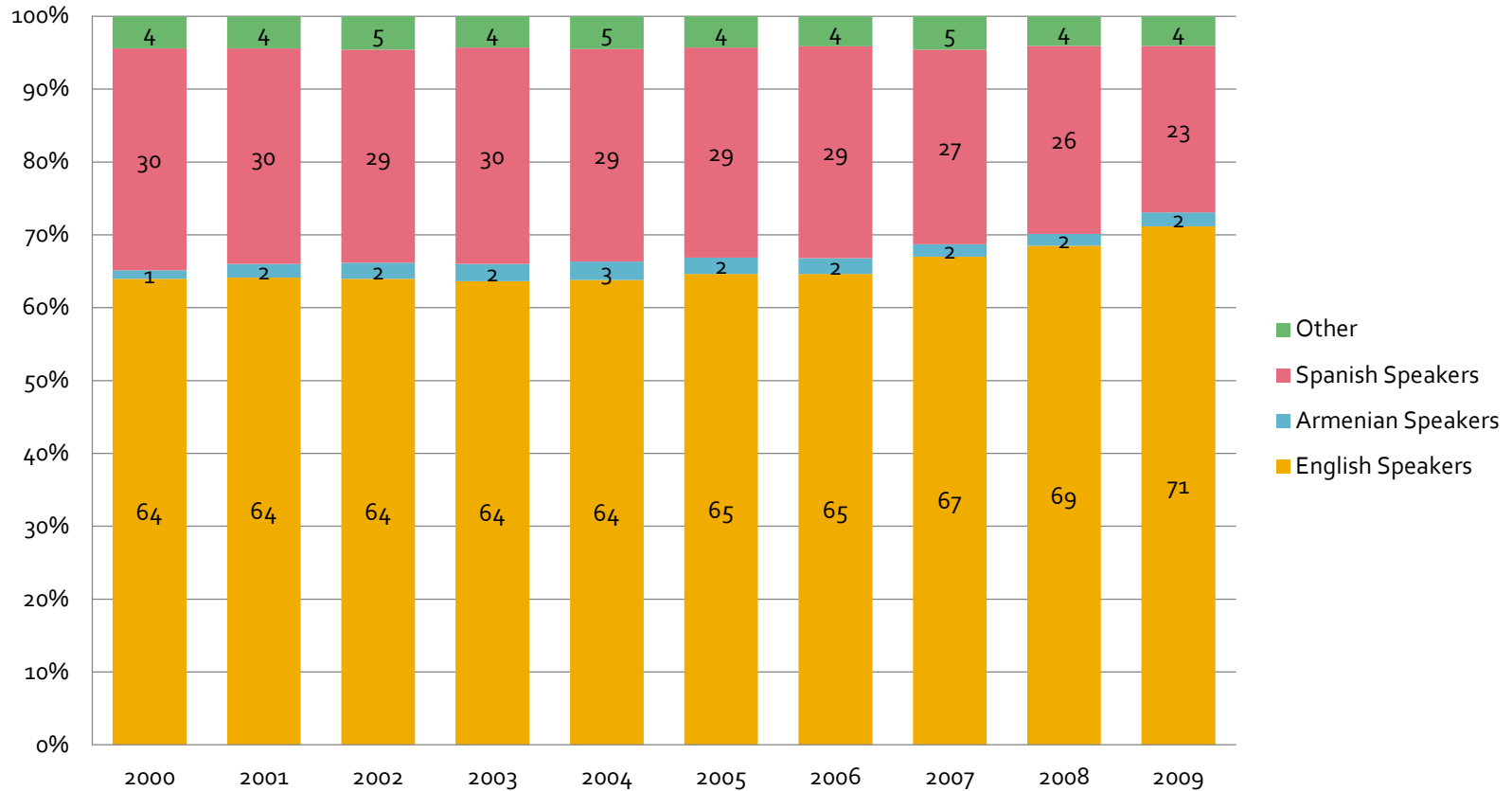
% Enrolled by Gender: Fall 2000 - 2009



- **Stable gender trends**
- **Approximately 65% female and 35% male**

Demographics Characteristics

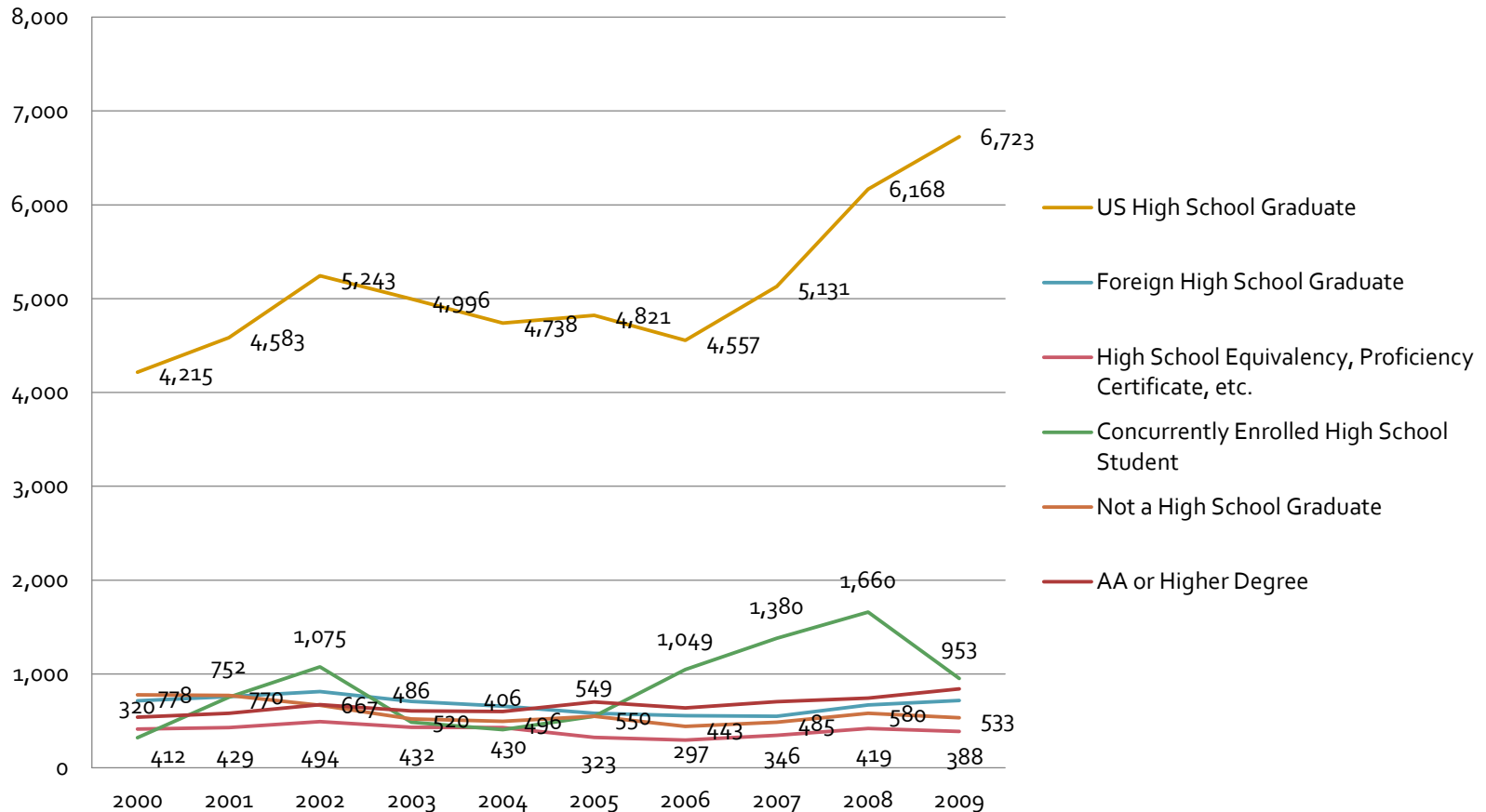
% Enrolled by Home Language: Fall 2000 - 2009



- **The majority of the students are English speakers followed by Spanish speakers**

Demographics Characteristics

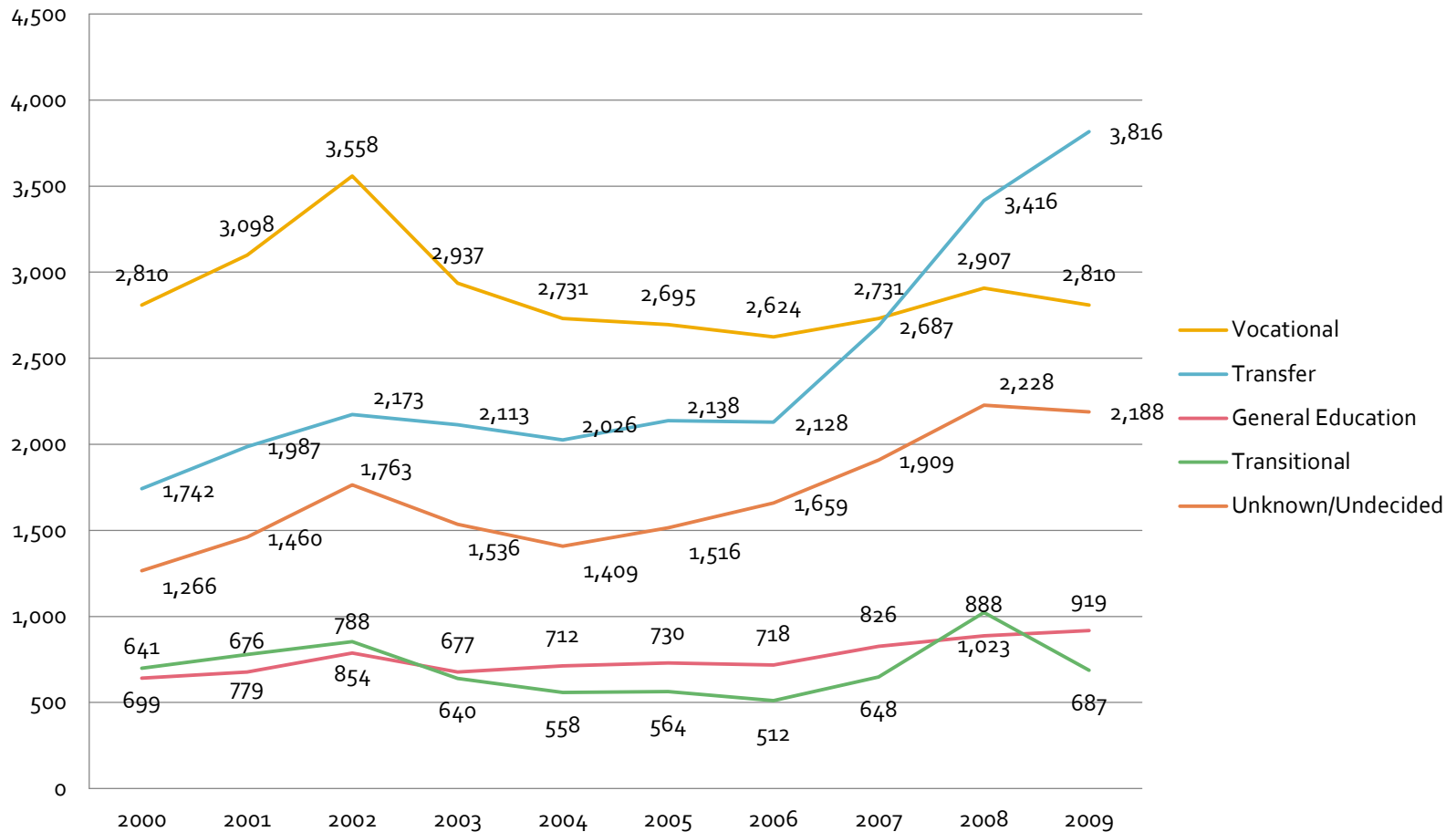
Enrolled by Educational Attainment: Fall 2000 - 2009



- Majority of students enrolled are U.S. high school graduates

Transfers

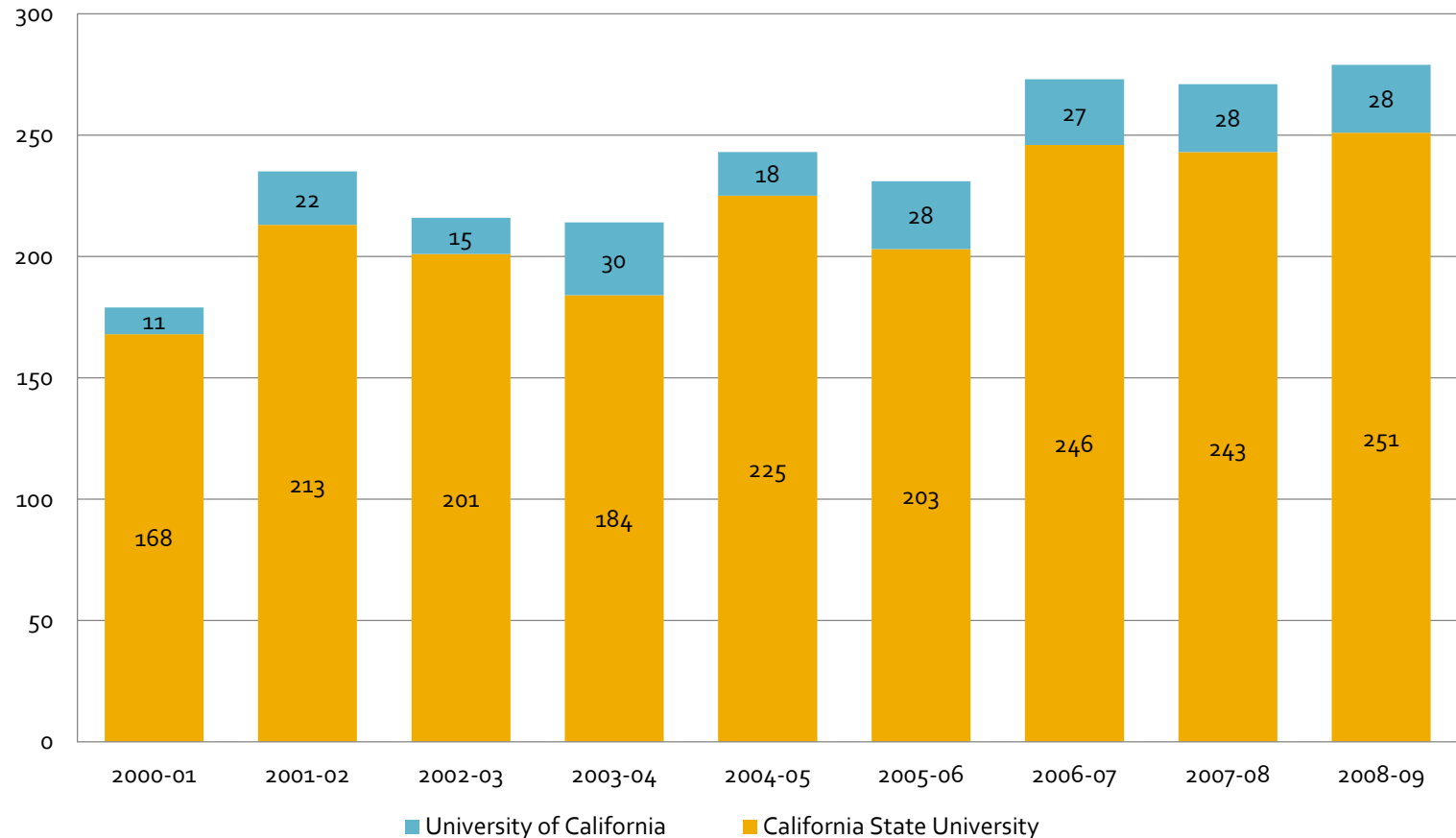
Enrolled by Educational Goal: Fall 2000 - 2009



■ **Significant increase in transfers**

Transfers

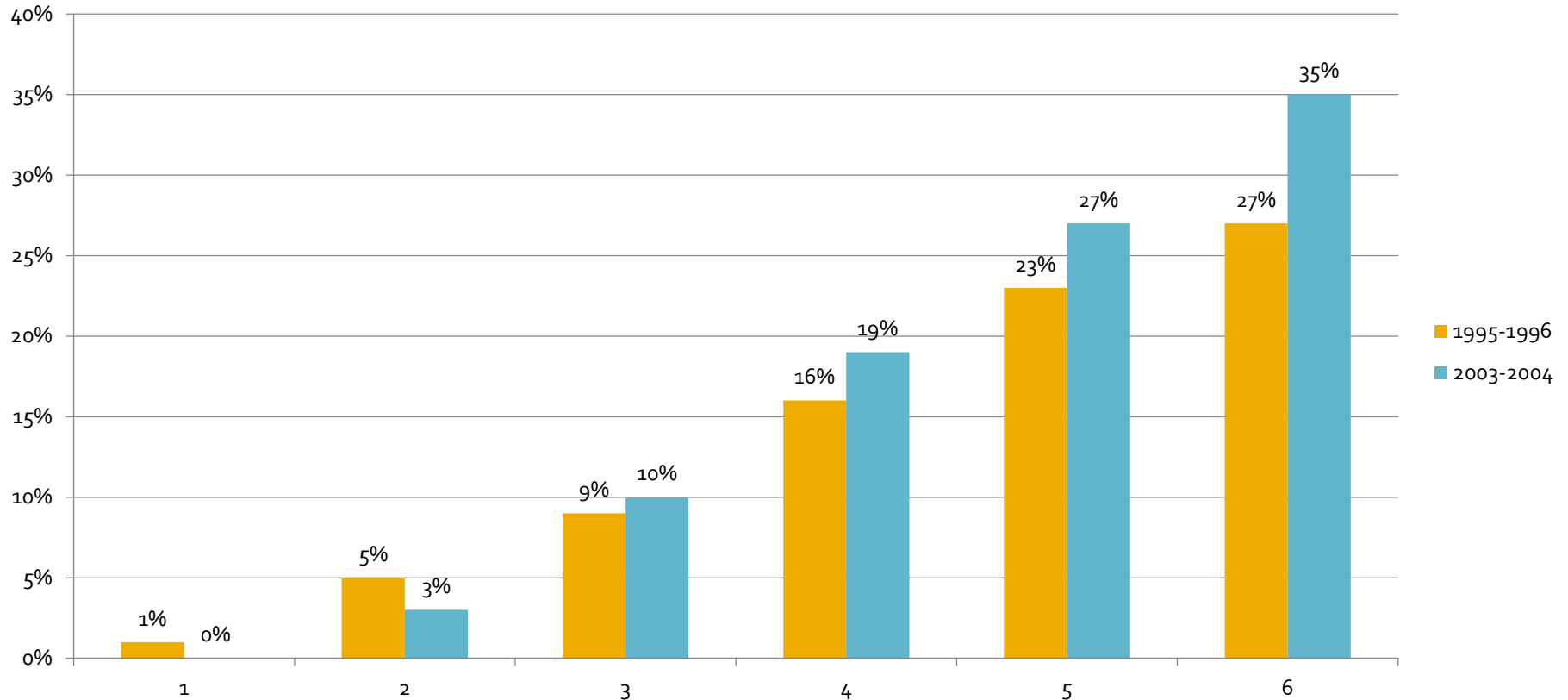
of Transfer Students to a UC or CSU: 2000-2009



- **Majority of students transfer to CSU**
- **Steady number of transfers for both the CSU and UC**

Transfers

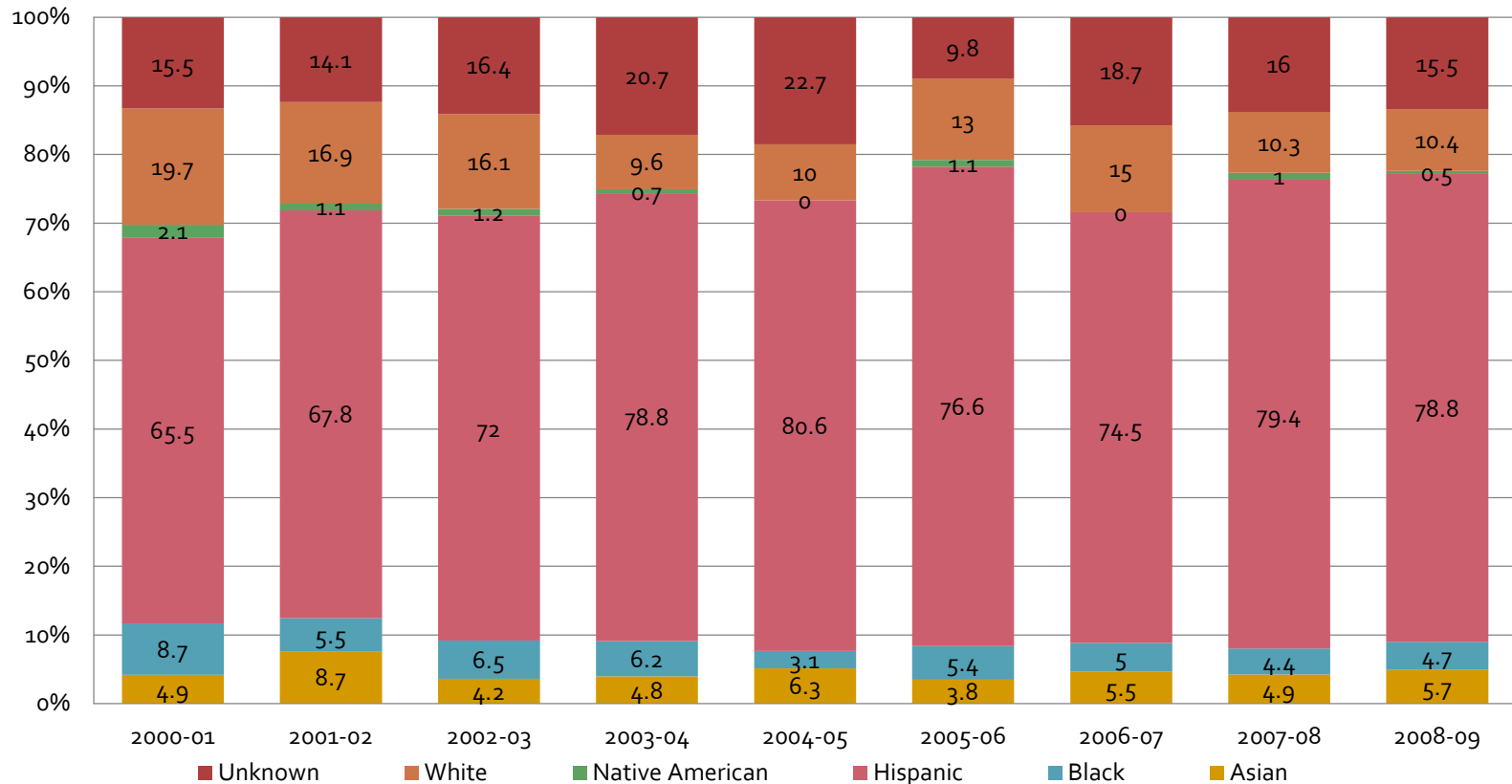
Transfer Velocity Cohort Report (6 Years)



- **Within 6 years, 35% of students who wanted to transfer successfully transferred**

Transfers

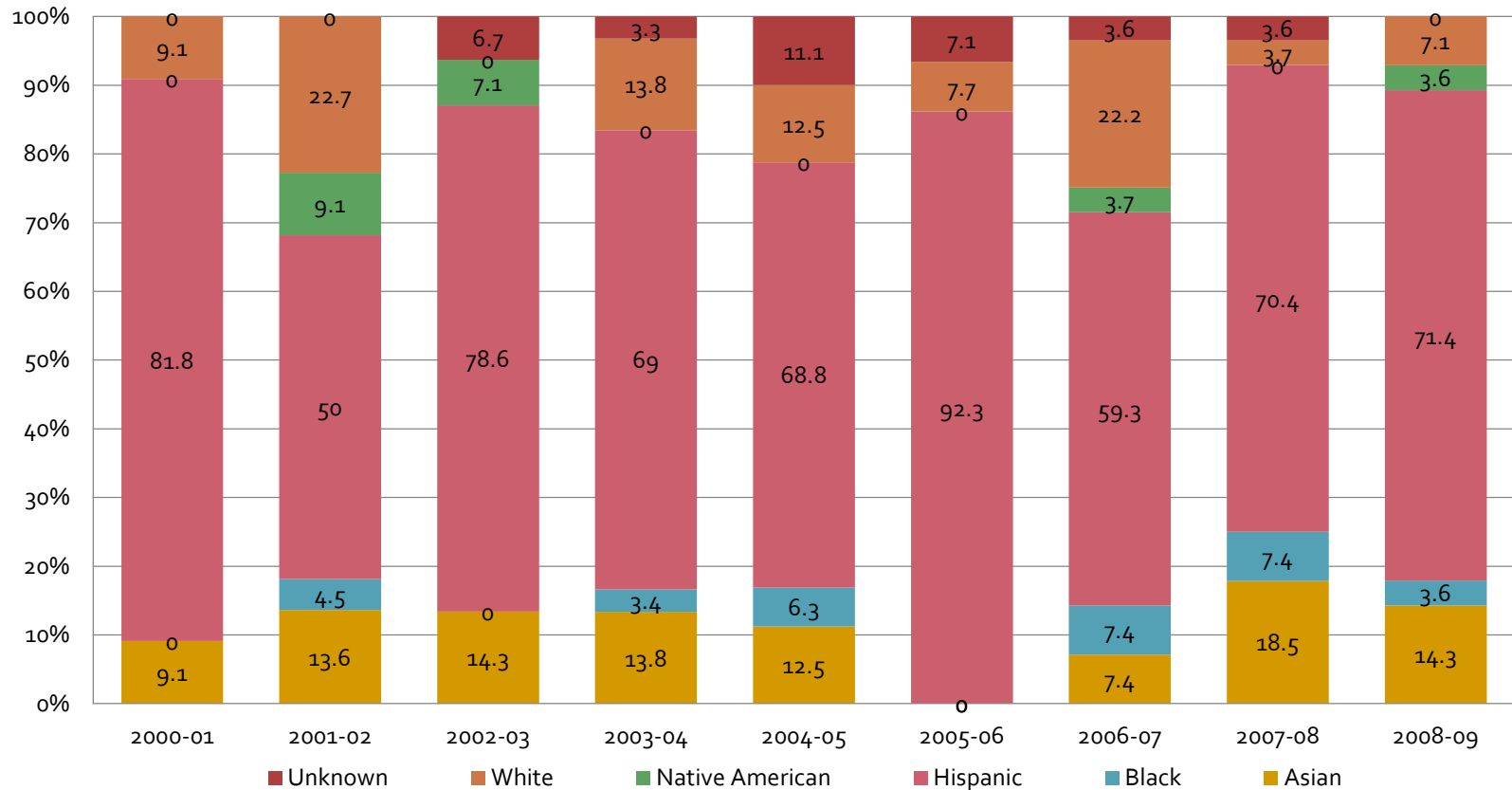
% of Transfer Students to CSU by Ethnicity: 2000 - 2009



- **Majority of students transferring to a CSU are Hispanic**
- **Asian and unknown are the second most transfers to a CSU**

Transfers

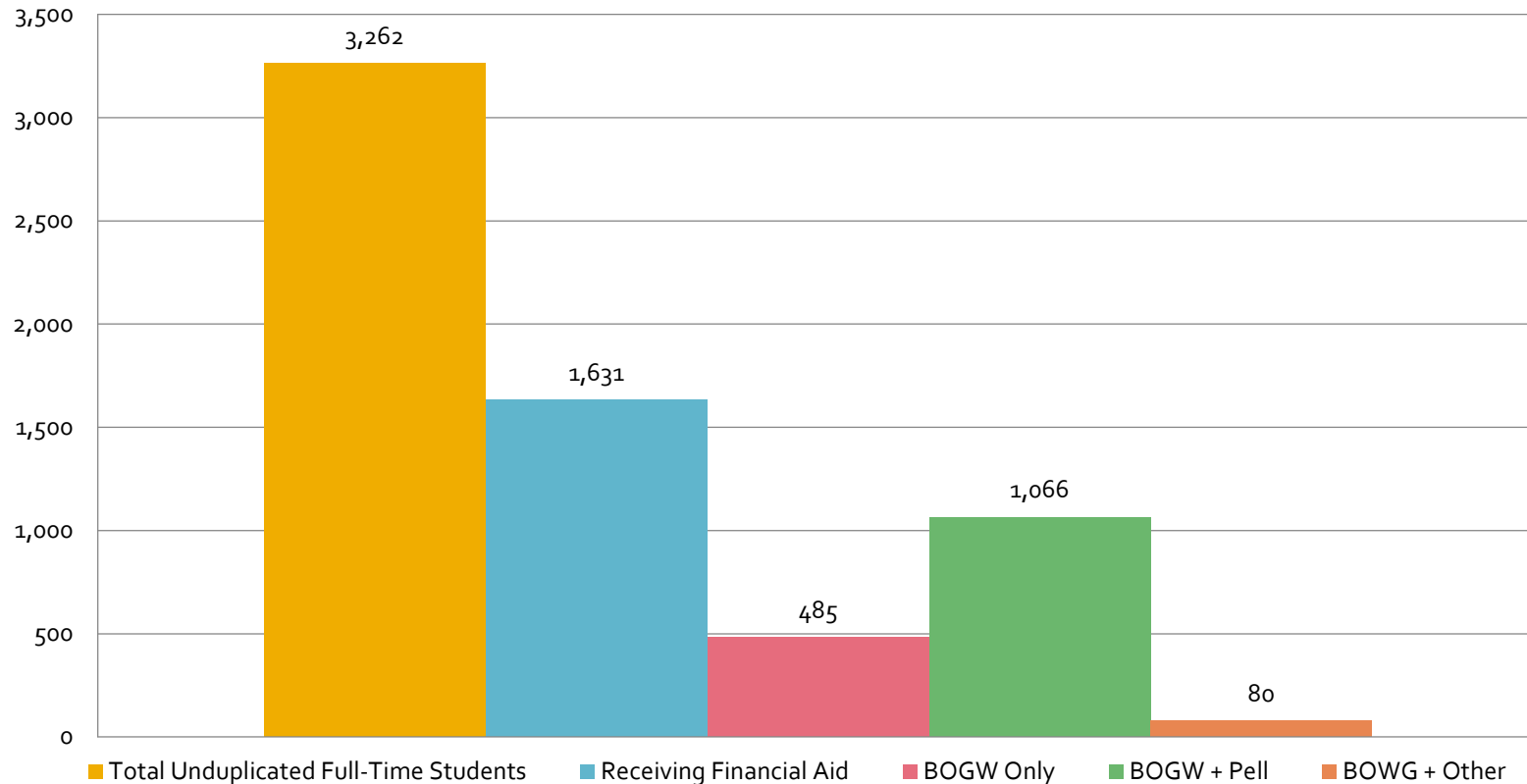
% of Transfer Students to UC by Ethnicity: 2000 – 2009



- **Majority of transfers to a UC are Hispanic**
- **Trends have been stable**

Financial Aid

of Full-Time Students Receiving Financial Aid 2007-2008 Academic Year



- **Approximately 62% of students receive some form of financial aid**

Math Sequence

MATHEMATICS COURSE SEQUENCES: A. GE Transfer and AA/AS Degree Track

